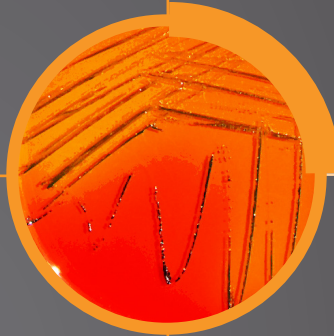
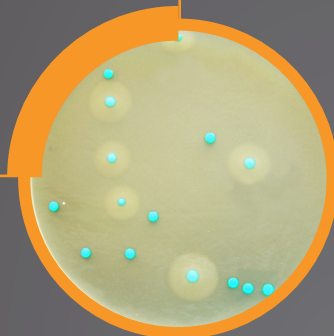
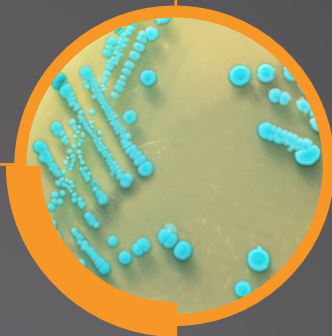
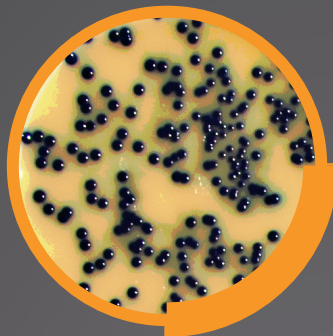


Applications for Food Microbiology Testing

Applications pour analyses de microbiologie alimentaire





BioMaxima S.A. is an European Union-based manufacturer of a wide range of in vitro diagnostic (IVD) products. The company was established in 2002 in Poland and it was listed on the Warsaw Stock Exchange in 2010.

BioMaxima products are CE marked and meet the requirements of EC directive 98/79/EC. Our Quality System is certified to the ISO 9001:2015 and ISO 13485:2016 international standards and quality control is carried out in accordance with ISO 11133:2014.

BioMaxima is focused on continuous growth and development, working internationally through a network of authorised distributors. Wherever BioMaxima products reach, our services and product support follow, meeting the highest standards. The strength of BioMaxima S.A. is having the own quality control department, professional technical service and after-sales service conducted by qualified specialists. We supply international markets including countries of Europe, Asia, Africa and South America.

BioMaxima S.A. est un fabricant européen d'une large gamme de dispositifs de diagnostic in vitro (IVD). La société a été créée en 2002 en Pologne et a été cotée à la Bourse de Varsovie en 2010.

Les produits BioMaxima sont marqués CE et répondent aux exigences de la directive CE 98/79 / CE. Notre système de qualité est certifié selon les normes internationales ISO 9001: 2015 et ISO 13485: 2016, et le contrôle de la qualité est effectué conformément à la norme ISO 11133: 2014.

BioMaxima se concentre sur le développement continu, travaillant à l'international à travers un réseau de distributeurs agréés. Quel que soit la destination de nos produits nous assurons leur entretien et le service après-vente aux standards les plus exigeants. L'avantage de Biomaxima est la possession de son propre contrôle de qualité, de son service technique professionnel et de son service après vente, qui sont dirigés par des spécialistes qualifiés.

Nous fournissons des marchés internationaux comprenant des pays d'Europe, d'Asie, d'Afrique et d'Amérique du Sud.

Applications for Pharmaceutical and Cosmetics Microbiology Testing
Applications pour analyses de microbiologie pharmaceutique et cosmétique



Applications for Food Microbiology Testing
Applications pour analyses de microbiologie alimentaire



Applications for Water Microbiology Testing
Applications pour analyses de microbiologie de l'eau



Applications for Clinical Microbiology
Applications pour la microbiologie clinique



Applications for Molecular Biology
Applications pour la biologie moléculaire



IVD Products
Dispositifs médicaux de diagnostic in vitro



Product	Page
Applicator for contact plates	26
Arginine acc. to Falkow Broth	16
B.G.A. LAB-AGAR™ acc. to ISO 6579	8, 9,
Bacillus cereus LAB-AGAR™ Base	18
Bacillus cereus LAB-AGAR™	18
Bacillus cereus Selective LAB-AGAR™ Base	18
Baird Parker (RPF) LAB-AGAR™ Base	13
Baird Parker LAB-AGAR™	12
Baird Parker LAB-AGAR™ + Letheen + Tween	24
Baird Parker LAB-AGAR™ Base	12, 13
Baird Parker LAB-AGAR™ Base acc. to ISO 6888-1	12
Baird Parker LAB-AGAR™ Base acc. to ISO 6888-2	13
Baird Parker RPF LAB-AGAR™	13
BCP LAB-AGAR™	14-15
Beer Industry Processes	23
Bile Esculin LAB-AGAR™	16
Bismuth Sulfite LAB-AGAR™	10
Blood No 2 LAB-AGAR™	18
Blood No 2 LAB-AGAR™ + 5 % KB	6, 11
Bolton Broth Base	11
Bolton Selective Supplement	11
Brain Heart Infusion Broth	12, 13
Brilliant Green Bile Broth 2 %	13, 19
Brucella Broth	11
Buffered Peptone Water	7-9, 14-15, 24
Buffered Peptone Water (BPW) DRYGravi LAB-BAG™	7-9, 14-15, 24
Buffered Peptone Water (transport tube)	7-9, 14-15, 24
Buffered Peptone Water GRAVI LAB-BAG™	7-9, 14-15, 24
BWP DRYGravi LAB-BAG™	7-9, 14-15, 24
CCDA LAB-AGAR™	11
Cetrimide LAB-AGAR™	25
Cetrimide LAB-AGAR™ + Letheen + Tween	25
CFC Supplement	21
Chromogenic Salmonella Selective LAB-AGAR™	8, 10
Chromogenic Campylobacter LAB-AGAR™	11
Chromogenic Cronobacter Isolation (CCI) LAB-AGAR™	16
Chromogenic E. coli O157 LAB-AGAR™	12
Chromogenic Listeria Confirmatory LAB-AGAR™	7
Chromogenic Listeria LAB-AGAR™	7
Chromogenic Listeria LAB-AGAR™ acc. to ISO 11290	6, 7, 25
Chromogenic Listeria LAB-AGAR™ Base acc. to ISO 11290	6, 7
Chromogenic Listeria SET Supplement acc. to ISO 11290	6, 7
Chromogenic Listeria Supplement acc. to ISO 11290	6, 7
Chromogenic Salmonella LAB-AGAR™ / Chromogenic Salmonella LAB-AGAR™ - biplates	8, 10
Chromogenic Salmonella LAB-AGAR™ / Hektoen LAB-AGAR™ - biplates	8, 10
Chromogenic Salmonella LAB-AGAR™ / XLD LAB-AGAR™ - biplates	8, 10
Chromogenic Salmonella Selective LAB-AGAR™	8, 10, 25
Chromogenic Salmonella Selective LAB-AGAR™ + Letheen + Tween	25
Clark Medium	6, 7, 10
Clark Medium (MRVP)	6, 7, 10
Contact Plates	25
Contact Plates IRR	26
CR-MOX LAB-AGAR™	16

Product	Page
Cronobacter Selective Broth (CSB)	16
Cryblock Insulated Aluminium Block - aluminium	28
CT-SMAC LAB-AGAR™	12
DG 18 LAB-AGAR™	21
Diluents	24
Dip-slides	27
Distilled Water	24
DRBC LAB-AGAR™	20
EC Medium	14
EMB (Eosin Methylene Blue) LAB-AGAR™	23
Egg's Yolk Polimixin Sterile Emulsion	18
Egg's Yolk Tellurite Sterile Emulsion	12, 13
Esterase Tween LAB-AGAR™	17
Esterase Tween LAB-AGAR™ Base	16
Ewing Malonate Modified Broth	12
Ferric Ammonium Citrate Supplement	6
Fraser Broth	6
Fraser Broth Base	6
Fraser Broth GRAVI LAB-BAG™	6
Gelatin Lactose Medium	23
Giolitti Cantoni with Polysorbate Broth	13
Glucose OF Medium	14-15
Glycerol	21, 23
Half Fraser (HF) DRYGravi LAB-BAG™	6
Half Fraser Broth	6
Half Fraser Broth Base	6
Half Fraser Broth GRAVI LAB-BAG™	6
ITC Broth	16
ITC Broth Base	16
ITC Selective Supplement	16
Karmali LAB-AGAR™	11
Kligler Iron LAB-AGAR™	8, 10, 12, 21
Kylose Broth	17
Kylose Broth acc. to ISO 11290	6, 7
10 % Lactose Broth	12
Lactose Sulfite Broth Base	23
Lauryl Sulfate Broth	13, 14
LEB Broth	7
LEB DRYGravi LAB-BAG™	7
LEE Broth	7
Listeria acc. to Oxford LAB-AGAR™ Base	6
Listeria acc. to Palcam LAB-AGAR™ Base	6
Listeria Enrichment acc. to Lovett Broth Base	6, 7
Listeria Selective acc. to Oxford Supplement	6
Listeria Selective acc. to Palcam Supplement	6
Lysed Horse Blood	11
Lysine acc. to Falkow Broth	12, 17
Lysine Decarboxylase Broth acc. to ISO 6579	8, 10
Mac Conkey LAB-AGAR™	23
Malt Extract LAB-AGAR™	23
Malt Extract Broth	23
Mannitol Salt LAB-AGAR™	25
McFarland Standard - Set of 0.5-4.0	28
McFarland Standard 0.5	28
McFarland Standard 1.0	28

Product	Page
McFarland Standard 2.0	28
McFarland Standard 3.0	28
McFarland Standard 4.0	28
Melibiose Broth (ISO 10273)	17
Microbank®	28
Microbank® Freezer Storage Box	28
MKTTn Broth	8, 9
Modified Motility LAB-AGAR™	12
Motility LAB-AGAR™	12
Motility LAB-AGAR™ acc. to ISO 11290	6, 7
Motility Nitrate Medium Base	23
MRS LAB-AGAR™	18
MRS LAB-AGAR™ pH 5,7	18
MRVP Medium acc. to ISO 11290	6, 7
MRVP Medium acc. to ISO 6579	8
MSRV Medium	8
MSRV Medium with Novobiocine	8
MSRV Supplement	8
m-TSB Broth acc. to ISO 16654	12
Mueller Kaufman with Novobiocin and Brilliant Green Broth Base	8
Nocive Brewers Bacteria LAB-AGAR™ Base Modified	23
Nocive Brewers Bacteria Broth Base Modified	23
Nutrient LAB-AGAR™	9, 10
Nutrient LAB-AGAR™ acc. to EN 12780	21
Nutrient LAB-AGAR™ acc. to ISO 21528	14, 15
Nutrient LAB-AGAR™ acc. to ISO 10273	1, 17
Oxford Listeria LAB-AGAR™	6
Palcam Listeria LAB-AGAR™	6
PCA IRR. LAB-AGAR™ + 4N	26
PCA IRR LAB-AGAR™	26
PCA IRR LAB-AGAR™ + Letheen	26
PCA IRR LAB-AGAR™ + Letheen + Tween	26
Petri Dish IRR	26
Phenol Red Broth Base	17
Phenylalanine LAB-AGAR™	17
Phosphate Buffered Saline (PBS)	24
Physiological saline + 0,1 % Tween 80	24
Plate Count Agar LAB-AGAR™	19
Plate Count with Milk LAB-AGAR™	19
Potassium Tellurite Solution 1 %	13
Potato Dextrose Broth	23
PPA LAB-AGAR™	21
Preston Broth Base	11
Preston Modified Supplement	11
Pseudomonas CFC LAB-AGAR™	21
Rabbit Coagulase Plasma	12, 13
Raka-Ray LAB-AGAR™ Base	23
Ramnose Broth acc. to ISO 11290	7
Ramnose Broth	17
Rappaport Soy Broth	8, 9
Rappaport Vassiliadis Soy Broth	8, 9
Reference Strains	28
Ringer Solution	24
Ringer Solution GRAVI LAB-BAG™	24
Rose Bengal LAB-AGAR™	23

Product	Page
RPF Supplement	13
Sabouraud Dextrose IRR. LAB-AGAR™	26
Sabouraud Dextrose IRR. LAB-AGAR™ + 4N (Ietheen, tween, L-histidine, sodium thiosulfate)	26
Sabouraud Dextrose IRR. LAB-AGAR™ + Letheen	26
Sabouraud Dextrose IRR. LAB-AGAR™ + Letheen + Tween	26
Sabouraud Dextrose with Chloramphenicol IRR. LAB-AGAR™	26
Sabouraud Dextrose with Chloramphenicol IRR. LAB-AGAR™ +Letheen	26
Sabouraud Dextrose with Chloramphenicol IRR.LAB-AGAR™ +Letheen+ Tween	26
Saline Peptone Water	11, 12, 13, 15, 18-24
Saline Peptone Water (SLW) DRYGravi LAB-BAG™	11, 12, 13, 15, 18-24
Saline Peptone Water GRAVI LAB-BAG™	11, 12, 13, 15, 18-24
Saline Peptone Water with Neutralized (ISO 18593)	24
SDA / MLDA Medium	23
Selenite Cystine Medium (SC)	9
SIM Medium	23
Simmons Citrate LAB-AGAR™	12, 17
SingleCup PCR Listeria monocytogenes LAB-KIT™	6
SingleCup PCR Salmonella spec. LAB-KIT™	6
0,85 % Sodium Chloride	25
0,85 % Sodium Chloride GRAVI LAB-BAG™	25
0,85% Sodium Chloride	25
0,9 % Sodium Chloride	17, 25
0,9 % Sodium Chloride GRAVI LAB-BAG™	25
Sodium Cystine Broth	9
Sorbitol Mac Conkey LAB-AGAR™	12
Sorbitol Peptone with Bile Salts	16
SS LAB-AGAR™ / Bismuth Sulfit LAB-AGAR™ - biplates	8, 10
SS LAB-AGAR™ / Chromogenic Salmonella LAB-AGAR™ - biplates	8, 10
SS LAB-AGAR™ / XLD LAB-AGAR™ - biplates	8, 10
Standard Methods with Powdered Milk LAB-AGAR™	19
Standards Methods (Plate Count Agar) LAB-AGAR™	19
Strains	28
(TBX) Tryptone Bile X-glucuronide LAB-AGAR™	20, 25
TBX LAB-AGAR™ + Letheen + Tween	24, 25
Thioglycollate Fluid Medium	22
Trehalose Broth (ISO 10273)	17
Triple Sugar Iron AB-AGAR™	9, 10
Trypticasein Soy Broth	17
Trypticasein Soy IRR. LAB-AGAR™ + 4N	26
Trypticasein Soy IRR.LAB-AGAR™	26
Trypticasein Soy LAB-AGAR™	16
Tryptone Water	14
Tryptophan Culture Broth	9, 10, 12, 17
TSA IRR.LAB-AGAR™ + 4N (Ietheen, tween, L-histidine, sodium thiosulfate)	26
TSA IRR. LAB-AGAR™	26
TSA IRR. LAB-AGAR™ + Letheen + Tween 80	26
TSA IRR. LAB-AGAR™ + Neutralized	26
TSA IRR. LAB-AGAR™ + Letheen	26
TSA IRR. LAB-AGAR™ + Letheen + Tween	26
TSA IRR.LAB-AGAR™ + 3N (Ietheen, tween, L-histidine)	26
TSA LAB-AGAR™	16
TSC LAB-AGAR™	22
TSC Supplement	22

Product	Page
TSYEA LAB-AGAR™ acc. to ISO 11290	7
TSYEB Broth	7
Tween	16
Universal Beer (UBA) LAB-AGAR™	23
Urea Christensen Broth	12
Urea LAB-AGAR™	9, 10, 17
Urea LAB-AGAR™ Base acc. to ISO 6579	9, 10, 17
Urea Sterile Solution 40 %	9, 10, 17
WL Nutrient Broth	23
WL Nutrient LAB-AGAR™	23
Wort Broth	23
Wort LAB-AGAR™	23
Vancomycin Supplement	16
Violet Red Bile with Glucose LAB-AGAR™	14-15
Violet Red Bile with Lactose LAB-AGAR™	19
VRBG LAB-AGAR™	14-15
VRBG LAB-AGAR™ + Lethen + Tween	25
VRBL LAB-AGAR™	19
VRBL LAB-AGAR™ + 4N	25
XLD LAB-AGAR™	8
Yersinia CIN LAB-AGAR™	16
Yersinia CIN Selective Supplement	16
Yersinia Selective LAB-AGAR™ Base	16

EN ISO 11290-1:2017.

Microbiology of the food chain. Horizontal method for the detection and enumeration of *Listeria monocytogenes* and other *Listeria* spp. - Part 1: Detection method

Microbiologie de la chaîne alimentaire. Méthode horizontale pour la détection et le dénombrement de *Listeria monocytogenes* et d'autres *Listeria* spp. - Partie no 1 : Méthode de détection

Steps	Description	Cat. No.	Package
Primary enrichment	Half Fraser Broth	BT 5022	6 x 225 ml
	Half Fraser Broth	PW 3005	50 x 10 ml
	Half Fraser (HF) DRYGravi LAB-BAG™	DGB 02	1 x 20 L
	Half Fraser (HF) DRYGravi LAB-BAG™	DGB 04	1 x 10 L
	Half Fraser (HF) DRYGravi LAB-BAG™	DVT 04	1x10 L+ filter unit
	Half Fraser Broth GRAVI LAB-BAG™	WR 0001	1 x 3 L
	Half Fraser Broth GRAVI LAB-BAG™	WR 0005	1 x 5 L
	Half Fraser Broth Base	PS 100	500 g
	Ferric Ammonium Citrate Supplement	SL 0011	10 vials 1/500 ml
	Ferric Ammonium Citrate Supplement	SL 0011B	10 vials 1/225 ml
	Ferric Ammonium Citrate Supplement	SL 0062	10 vials 1/2,25 L
Secondary enrichment	Fraser Broth	BT 5023.01	6 x 100 ml
	Fraser Broth	BT 5023.02	6 x 200 ml
	Fraser Broth	BT 5023.05	6 x 500 ml
	Fraser Broth	PW 4024	50 x 10 ml
	Fraser Broth	PW 3144	50 x 10 ml (glass tubes)
	Fraser Broth GRAVI LAB-BAG™	WR 0010	1 x 3 L
	Fraser Broth GRAVI LAB-BAG™	WR 0011	1 x 5 L
	Fraser Broth Base	PS 101	500 g
	Ferric Ammonium Citrate Supplement	SL 0011	10 vials 1/500 ml
	Ferric Ammonium Citrate Supplement	SL 0011B	10 vials 1/225 ml
	Ferric Ammonium Citrate Supplement	SL 0062	10 vials 1/2,25 L
Isolation	Chromogenic <i>Listeria</i> LAB-AGAR™ Base acc. to ISO 11290	PS 165	500 g
	Chromogenic <i>Listeria</i> Supplement acc. to ISO 11290	SL 0001	5+5 vials 2/500 ml
	Chromogenic <i>Listeria</i> LAB-AGAR™ acc. to ISO 11290	PP 5009	10 plates/90 mm
	<i>Listeria</i> acc. to Oxford LAB-AGAR™ Base	PS 104	500 g
	<i>Listeria</i> Selective acc. to Oxford Supplement	SL 0021	10 vials 1/500 ml
	Oxford <i>Listeria</i> LAB-AGAR™	PP 1292	10 plates
	<i>Listeria</i> acc. to Palcam LAB-AGAR™ Base	PS 102	500 g
	<i>Listeria</i> Selective acc. to Palcam Supplement	SL 0022	10 vials 1/500 ml
	Palcam <i>Listeria</i> LAB-AGAR™	PP 1502	10 plates
Confirmation	Blood No 2 LAB-AGAR™ + 5 % KB	PP 0015	10 plates
	Clark Medium	PS 253	500 g
	Ksylose Broth acc. to ISO 11290	PW 3000	50 x 3 ml
	Ksylose Broth acc. to ISO 11290	PW 3208	50 x 5 ml (glass tubes)
	Motility LAB-AGAR™ acc. to ISO 11290	PW 3221	50 x 5 ml
	MRVP Medium acc. to ISO 11290	PW 3210	50 x 3ml
	<i>Listeria</i> Enrichment acc. to Lovett Broth Base	PS 209	500 g
	Ramnose Broth acc. to ISO 11290	PW 3001	50 x 3 ml
	Ramnose Broth acc. to ISO 11290	PW 3209	50 x 5ml (glass tubes)
	TSYEA LAB-AGAR™ acc. to ISO 11290	PS 193	500 g
	TSYEA LAB-AGAR™ acc. to ISO 11290	PP 0064	10 plates
	TSYEA LAB-AGAR™ acc. to ISO 11290	BT 5066.01	6 x 100 ml
	TSYEA LAB-AGAR™ acc. to ISO 11290	BT 5066.02	6 x 200 ml
	TSYEA LAB-AGAR™ acc. to ISO 11290	BT 5066.05	6 x 500 ml
TSYEB Broth	PW 3147	50 x 5ml	

EN ISO 11290-2:2017-2.

Microbiology of the food chain. Horizontal method for the detection and enumeration of *Listeria monocytogenes* and of *Listeria* spp. - Part 2: Enumeration methodMicrobiologie de la chaîne alimentaire. Méthode horizontale pour la détection et le dénombrement de *Listeria monocytogenes* et de *Listeria* spp. - Partie no 2: Méthode de dénombrement

Steps	Description	Cat. No.	Package
Pre-enrichment	Buffered Peptone Water	BT 5016.01	6 x 100 ml
	Buffered Peptone Water	BT 5016.02	6 x 200 ml
	Buffered Peptone Water	BT 5016.05	6 x 500 ml
	Buffered Peptone Water	BT 5020	6 x 225 ml
	Buffered Peptone Water	BT 5171	6 x 90 ml
	Buffered Peptone Water (BPW) acc. to ISO 6579-1 DRYGravi LAB-BAG™	DGB 01	1 x 20 L
	Buffered Peptone Water (BPW) acc. to ISO 6579-1 DRYGravi LAB-BAG™	DGB 03	1 x 10 L
	Buffered Peptone Water GRAVI LAB-BAG™	WR 0006	1 x 3 L
	Buffered Peptone Water GRAVI LAB-BAG™	WR 0005	1 x 5 L
Isolation	Chromogenic <i>Listeria</i> LAB-AGAR™ Base acc. to ISO 11290	PS 165	500 g
	Chromogenic <i>Listeria</i> SET Supplement acc. to ISO 11290	SL 0001	10 vials 2/500 ml
	Chromogenic <i>Listeria</i> LAB-AGAR™ acc. to ISO 11290	PP 5009	10 plates/ 90 mm
Confirmation	Blood No 2 LAB-AGAR™ + 5 % KB	PP 0015	10 plates
	Clark Medium	PS 253	500 g
	Ksylose Broth acc. to ISO 11290	PW 3000	50 x 5 ml
	Ksylose Broth acc. to ISO 11290	PW 3208	50 x 5 ml (glass tubes)
	Motility LAB-AGAR™ acc. to ISO 11290	PW 3221	50 x 5 ml
	MRVP Medium acc. to ISO 11290	PW 3210	50 x 5 ml
	<i>Listeria</i> Enrichment acc. to Lovett Broth Base	PS 209	500 g
	Ramnose Broth acc. to ISO 11290	PW 3001	50 x 3 ml
	Ramnose Broth acc. to ISO 11290	PW 3209	50 x 5 ml (glass tubes)
	TSYEA LAB-AGAR™ acc. to ISO 11290	PS 193	500 g
	TSYEA LAB-AGAR™ acc. to ISO 11290	PP 0064	10 plates
	TSYEA LAB-AGAR™ acc. to ISO 11290	BT 5066.01	6 x 100 ml
	TSYEA LAB-AGAR™ acc. to ISO 11290	BT 5066.01	6 x 200 ml
	TSYEA LAB-AGAR™ acc. to ISO 11290	BT 5066.05	6 x 500 ml
TSYEB Broth	PW 3147	50 x 5ml	

Additional Products for *Listeria* spp detectionProduits supplémentaires pour la détection de *Listeria* spp

Steps	Description	Cat. No.	Package
Enrichment	LEB Broth	PS 420	500 g
	LEB DRYGravi LAB-BAG™	DGB 08	1 x 20 L
	LEB Broth	BT 5224	6 x 225 ml
	LEE Broth	BT 5232	6 x 225 ml
Isolation	Chromogenic <i>Listeria</i> LAB-AGAR™	PP 0169	10 plates
Confirmation	Chromogenic <i>Listeria</i> Confirmatory LAB-AGAR™	PP 0156	10 plates

EN-ISO 6579-1:2017

Microbiology of the food chain. Horizontal method for the detection and enumeration of Salmonella spp. - Part 1: Part 1: Horizontal method for the detection of Salmonella spp.

Microbiologie de la chaîne alimentaire. Méthode horizontale pour la détection, le dénombrement et le sérotypage de Salmonella. - Partie no 1: Méthode horizontale pour la détection de Salmonella spp.

Steps	Description	Cat. No.	Package
Pre-enrichment	Buffered Peptone Water	PS 52	500 g
	Buffered Peptone Water	BT 5016.01	6 x 100 ml
	Buffered Peptone Water	BT 5016.02	6 x 200 ml
	Buffered Peptone Water	BT 5016.05	6 x 500 ml
	Buffered Peptone Water	BT 5020	6 x 225 ml
	Buffered Peptone Water	BT 5171	6 x 90 ml
	Buffered Peptone Water (BPW) acc. to ISO 6579-1 DRYGravi LAB-BAG™	DGB 01	1 x 20 L
	Buffered Peptone Water (BPW) acc. to ISO 6579-1 DRYGravi LAB-BAG™	DGB 03	1 x 10 L
	Buffered Peptone Water GRAVI LAB-BAG™	WR 0006	1 x 3 L
	Buffered Peptone Water GRAVI LAB-BAG™	WR 0005	1 x 5 L
Selective enrichment	MKTn Broth	PW 6092	50 x 10 ml
	MKTn Broth	BT 5167	6 x 50 ml
	MSRV Medium	BT 5063.01	6 x 100 ml
	MSRV Medium	BT 5063.02	6 x 200 ml
	MSRV Medium	PS 203	500 g
	MSRV Supplement	SL 0027	10 vials 1/500 ml
	MSRV Medium with Novobiocine	PS 225	500 g
	Mueller Kaufman with Novobiocin and Brilliant Green Broth Base	PS 147	500 g
	Rappaport Soy Broth	PS 65	500 g
	Rappaport Soy Broth	PW 4245	50 x 10 ml
	Rappaport Vassiliadis Soy Broth	BT 5183	6 x 50 ml
	Rappaport Vassiliadis Soy Broth	BT 5183.01	6 x 100 ml
	Rappaport Vassiliadis Soy Broth	BT 5183.02	6 x 200 ml
Selective isolation	B.G.A. LAB-AGAR™ acc. to ISO 6579	PS 98	500 g
	B.G.A. LAB-AGAR™ acc. to ISO 6579	BT 5096.01	6 x 100 ml
	B.G.A. LAB-AGAR™ acc. to ISO 6579	BT 5096.02	6 x 200 ml
	B.G.A. LAB-AGAR™ acc. to ISO 6579	BT 5096.05	6 x 500 ml
	B.G.A. LAB-AGAR™ acc. to ISO 6579	PP 1360	10 plates
	Chromogenic Salmonella Selective LAB-AGAR™	PP 0115	10 plates
	Chromogenic Salmonella LAB-AGAR™ / Chromogenic Salmonella LAB-AGAR™ - biplates	PD 044	10 plates
	Chromogenic Salmonella LAB-AGAR™ / Hektoen LAB-AGAR™ -biplates	PD 024	10 plates
	Chromogenic Salmonella LAB-AGAR™ / XLD LAB-AGAR™-biplates	PD 023	10 plates
	SS LAB-AGAR™ / Bismuth Sulfite LAB-AGAR™-biplates	PD 006	10 plates
	SS LAB-AGAR™ / Chromogenic Salmonella LAB-AGAR™ -biplates	PD 020	10 plates
	SS LAB-AGAR™ / XLD LAB-AGAR™	PD 037	10 plates
	XLD LAB-AGAR™	PS 45	500 g
	XLD LAB-AGAR™	BT 5121.01	6 x 100 ml
	XLD LAB-AGAR™	BT 5121.02	6 x 200 ml
	XLD LAB-AGAR™	BT 5121.05	6 x 500 ml
	XLD LAB-AGAR™	PP 1330	10 plates
Confirmation	Clark Medium (MRVP)	PS 253	500 g
	MRVP Medium acc. to ISO 6579	PW 3210	50 x 3ml
	Kligler Iron LAB-AGAR™	PS 08	500 g
	Kligler Iron LAB-AGAR™	BT 5006.01	6 x 100 ml
	Kligler Iron LAB-AGAR™	BT 5006.02	6 x 200 ml
	Kligler Iron LAB-AGAR™	BT 5006.05	6 x 500 ml
	Kligler Iron LAB-AGAR™	PW 3057	50 x 5 ml (slant)
	Kligler Iron LAB-AGAR™	PW 3116	50 x 3 ml (slant)
Lysine Decarboxylase Broth acc. to ISO 6579	PS 57	500 g	

Steps	Description	Cat. No.	Package
	Lysine Decarboxylase Broth acc. to ISO 6579	PW 3186	50 x 5 ml
	Nutrient LAB-AGAR™	PS 85	500 g
	Nutrient LAB-AGAR™	BT 5126.01	6 x 100 ml
	Nutrient LAB-AGAR™	BT 5126.02	6 x 200 ml
	Nutrient LAB-AGAR™	BT 5126.05	6 x 500 ml
	Nutrient LAB-AGAR™	PP 1503	10 plates
	Triple Sugar Iron AB-AGAR™	PS 44	500 g
	Triple Sugar Iron AB-AGAR™	PW 3060	50 x 7 ml (slant)
	Tryptophan Culture Broth	PS 132	500 g
	Tryptophan Culture Broth	BT 5030.01	6 x 100 ml
	Tryptophan Culture Broth	BT 5030.02	6 x 200 ml
	Tryptophan Culture Broth	BT 5030.05	6 x 500 ml
	Tryptophan Culture Broth	PW 3012	50 x 5 ml
	Urea LAB-AGAR™ Base acc. to ISO 6579	PS 211	500 g
	Urea Sterile Solution 40 %	SL 0041	100 ml
	Urea Sterile Solution 40 %	SL 0111	10 x 5 ml
	Urea LAB-AGAR™	PW 4233	10 x 5 ml (slant)

EN-ISO 6579-1:2017.

Detection of *Salmonella enterica* subspecies *enterica* serovares Typhi and Paratyphi

Détection de *Salmonella enterica* sous-espèce *enterica* serovraes Typhi et Paratyphi

Steps	Description	Cat. No.	Package
Pre-enrichment	Buffered Peptone Water	PS 52	500 g
	Buffered Peptone Water	BT 5016.01	6 x 100 ml
	Buffered Peptone Water	BT 5016.02	6 x 200 ml
	Buffered Peptone Water	BT 5016.05	6 x 500 ml
	Buffered Peptone Water	BT 5020	6 x 225 ml
	Buffered Peptone Water	BT 5171	6 x 90 ml
	Buffered Peptone Water (BPW) acc. to ISO 6579-1 DRYGravi LAB-BAG™	DGB 01	1 x 20 L
	Buffered Peptone Water (BPW) acc. to ISO 6579-1 DRYGravi LAB-BAG™	DGB 03	1 x 10 L
	Buffered Peptone Water GRAVI LAB-BAG™	WR 0006	1 x 3 L
	Buffered Peptone Water GRAVI LAB-BAG™	WR 0005	1 x 5 L
Selective enrichment	MKTTn Broth	PW 6092	50 x 10 ml
	MKTTn Broth	BT 5167	6 x 50 ml
	MSRV Medium	BT 5063.01	6 x 100 ml
	MSRV Medium	BT 5063.02	6 x 200 ml
	MSRV Medium	PS 203	500 g
	MSRV Supplement	SL 0027	10 vials 1/500 ml
	MSRV Medium with Novobiocine	PS 225	500 g
	Mueller Kaufman with Novobiocin and Brilliant Green Broth Base	PS 147	500 g
	Rappaport Soy Broth	PS 65	500 g
	Rappaport Soy Broth	PW 4245	50 x 10 ml
	Rappaport Vassiliadis Soy Broth	BT 5183	6 x 50 ml
	Rappaport Vassiliadis Soy Broth	BT 5183.01	6 x 100 ml
	Rappaport Vassiliadis Soy Broth	BT 5183.02	6 x 200 ml
	Selenite Cystine Medium (SC)	BT 5238.02	6 x 200 ml
	Sodium Cystine Broth	PS 36	500 g
	Sodium Cystine Broth	PW 3192	50 x 9 ml
Selective isolation	B.G.A. LAB-AGAR™ acc. to ISO 6579	PS 98	500 g
	B.G.A. LAB-AGAR™ acc. to ISO 6579	BT 5096.01	6 x 100 ml
	B.G.A. LAB-AGAR™ acc. to ISO 6579	BT 5096.02	6 x 200 ml

EN-ISO 6579-1:2017.

Detection of Salmonella enterica subspecies enterica serovares Typhi and Paratyphi

Détection de Salmonella enterica sous-espèce enterica serovares Typhi et Paratyphi

Steps	Description	Cat. No.	Package
	B.G.A. LAB-AGAR™ acc. to ISO 6579	BT 5096.05	6 x 500 ml
	B.G.A. LAB-AGAR™ acc. to ISO 6579	PP 1360	10 plates
	Bismuth Sulfite LAB-AGAR™	PS 01	500 g
	Bismuth Sulfite LAB-AGAR™	BT 5003.01	6 x 100 ml
	Bismuth Sulfite LAB-AGAR™	BT 5003.02	6 x 200 ml
	Bismuth Sulfite LAB-AGAR™	BT 5003.05	6 x 500 ml
	Bismuth Sulfite LAB-AGAR™	PP 1040	10 plates / 90 mm
	Bismuth Sulfite LAB-AGAR™	PPM 1040	10 plates / 55 mm
	Chromogenic Salmonella Selective LAB-AGAR™	PP 0115	10 plates
	Chromogenic Salmonella LAB-AGAR™ / Chromogenic Salmonella LAB-AGAR™ -biplates	PD 044	10 plates
	Chromogenic Salmonella LAB-AGAR™ / Hektoen LAB-AGAR™ -biplates	PD 024	10 plates
	Chromogenic Salmonella LAB-AGAR™ / XLD LAB-AGAR™-biplates	PD 023	10 plates
	SS LAB-AGAR™ / Bismuth Sulfite LAB-AGAR™-biplates	PD 006	10 plates
	SS LAB-AGAR™ / Chromogenic Salmonella LAB-AGAR™ -biplates	PD 020	10 plates
	SS LAB-AGAR™ / XLD LAB-AGAR™ -biplates	PD 037	10 plates
	XLD LAB-AGAR™	PS 45	500 g
	XLD LAB-AGAR™	BT 5121.01	6 x 100 ml
	XLD LAB-AGAR™	BT 5121.02	6 x 200 ml
	XLD LAB-AGAR™	BT 5121.05	6 x 500 ml
	XLD LAB-AGAR™	PP 1330	10 plates
Confirmation	Clark Medium (MRVP)	PS 253	500 g
	MRVP Medium acc. to ISO 6579	PW 3210	50 x 3ml
	Kligler Iron LAB-AGAR™	PS 08	500 g
	Kligler Iron LAB-AGAR™	BT 5006.01	6 x 100 ml
	Kligler Iron LAB-AGAR™	BT 5006.02	6 x 200 ml
	Kligler Iron LAB-AGAR™	BT 5006.05	6 x 500 ml
	Kligler Iron LAB-AGAR™	PW 3057	50 x 5 ml (slant)
	Kligler Iron LAB-AGAR™	PW 3116	50 x 3 ml (slant)
	Lysine Decarboxylase Broth acc. to ISO 6579	PS 57	500 g
	Lysine Decarboxylase Broth acc. to ISO 6579	PW 3186	50 x 5 ml
	Nutrient LAB-AGAR™	PS 85	500 g
	Nutrient LAB-AGAR™	BT 5126.01	6 x 100 ml
	Nutrient LAB-AGAR™	BT 5126.02	6 x 200 ml
	Nutrient LAB-AGAR™	BT 5126.05	6 x 500 ml
	Nutrient LAB-AGAR™	PP 1503	10 plates
	Triple Sugar Iron AB-AGAR™	PS 44	500 g
	Triple Sugar Iron AB-AGAR™	PW 3060	50 x 7 ml (slant)
	Tryptophan Culture Broth	PS 132	500 g
	Tryptophan Culture Broth	BT 5030.01	6 x 100 ml
	Tryptophan Culture Broth	BT 5030.02	6 x 200 ml
	Tryptophan Culture Broth	BT 5030.05	6 x 500 ml
	Tryptophan Culture Broth	PW 3012	50 x 5 ml
	Urea LAB-AGAR™ Base acc. to ISO 6579	PS 211	500 g
	Urea Sterile Solution 40 %	SL 0041	100 ml
	Urea Sterile Solution 40 %	SL 0111	10 x 5 ml
	Urea LAB-AGAR™	PW 4233	10 x 5 ml (slant)

EN – ISO 10272-1:2017.

Microbiology of food and animal feed. Horizontal method for detection and enumeration of Campylobacter. - Part 1: Detection method

Microbiologie des aliments et aliments pour animaux. Méthode horizontale pour la détection et le dénombrement de Campylobacter. - Partie no 1: Méthode de détection

Steps	Description	Cat. No.	Package
Selective enrichment	Bolton Broth Base	PS 179	500 g
	Bolton Selective Supplement	SL 0050	10 vials 1/500 ml
	Lysed Horse Blood	SL 0103	100 ml
	Bolton Broth	BT 5212.05	6 x 500 ml
	Preston Broth Base	PS 255	500 g
	Preston Modified Supplement	SL 0084	10 vials 1/500 ml
Selective isolation	CCDA LAB-AGAR™	PP 0017	10 plates
	Blood Free Campylobacter CCDA LAB AGAR™ Base	PF 159	500 g
	Campylobacter CCDA Selective Supplement	SL 0005	10 vials 1/500 ml
	Chromogenic Campylobacter LAB-AGAR™	PP 0163	10 plates
	Karmali LAB-AGAR™	PP 0022	10 plates
Confirmation	Blood No 2 LAB-AGAR™ + 5 % KB	PP 0015	10 plates
	Brucella Broth	PS 137	500 g
	Brucella Broth	PW 3097	50 x 5 ml
	Brucella Broth	PW 3200	50 x 3 ml
	Brucella Broth	PW 3172	50 x 10 ml

EN ISO 10272-2:2017.

Microbiology of food and animal feed. Horizontal method for detection and enumeration of Campylobacter. - Part 2: Colony-count technique

Microbiologie des aliments et aliments pour animaux. Méthode horizontale pour la détection et le dénombrement de Campylobacter. - Partie no 2: Technique de comptage des colonies

Steps	Description	Cat. No.	Package
Initial suspension	Saline Peptone Water	PS 118	500 g
	Saline Peptone Water	BT 5094.01	6 x 100 ml
	Saline Peptone Water	BT 5094.02	6 x 200 ml
	Saline Peptone Water	BT 5094.05	6 x 500 ml
	Saline Peptone Water	BT 5027	6 x 90 ml
	Saline Peptone Water GRAVI LAB-BAG™	WR 0008	1 x 3 L
	Saline Peptone Water GRAVI LAB-BAG™	WR 0009	1 x 5 L
	Saline Peptone Water (SLW) DRYGravi LAB-BAG™	DGB 05	1 x 20 L
	Saline Peptone Water (SLW) DRYGravi LAB-BAG™	DGB 07	1 x 10 L
	SLW DRYGravi LAB-BAG™	DVT 005	1 x 20 L + filter unit
	SLW DRYGravi LAB-BAG™	DVT 007	1 x 10 L + filter unit
	Saline Peptone Water	PW 3055	50 x 9 ml
	Isolation	CCDA LAB-AGAR™	PP 0017
Blood Free Campylobacter CCDA LAB AGAR™ Base		PF 159	500 g
Campylobacter CCDA Selective Supplement		SL 0005	10 vials 1/500 ml
Confirmation	Blood No 2 LAB-AGAR™ + 5 % KB	PP 0015	10 plates
	Brucella Broth	PS 137	500 g
	Brucella Broth	PW 3097	50 x 5 ml
	Brucella Broth	PW 3200	50 x 3 ml
	Brucella Broth	PW 3172	50 x 10 ml

EN-ISO 16654.

Microbiology of food and animal feeding stuffs- Horizontal method for the detection of Escherichia coli O157

Microbiologie des aliments - Méthode horizontale pour la détection d'Escherichia coli O157

Steps	Description	Cat. No.	Package
Selective propagation	m-TSB Broth acc. to ISO 16654	BT 5069.01	6 x 100 ml
	m-TSB Broth acc. to ISO 16654	BT 5069.02	6 x 200 ml
	m-TSB Broth acc. to ISO 16654	BT 5069.05	6 x 500 ml
Selective isolation	CT-SMAC LAB-AGAR™	PP 0042	10 plates
	Chromogenic E. coli O157 LAB-AGAR™	PP 0041	10 plates
	Sorbitol Mac Conkey LAB-AGAR™	PS 21	500 g
	Sorbitol Mac Conkey LAB-AGAR™	BT 5021.01	6 x 100 ml
	Sorbitol Mac Conkey LAB-AGAR™	BT 5021.02	6 x 200 ml
	Sorbitol Mac Conkey LAB-AGAR™	BT 5021.05	6 x 500 ml
	Sorbitol Mac Conkey LAB-AGAR™	PP 1021	10 plates
Confirmation	Ewing Malonate Modified Broth	PW 3020	50 x 5 ml
	Kligler Iron LAB-AGAR™	PW 3057	50 x 5 ml
	10 % Lactose Broth	PW 3007	50 x 5 ml
	Lysine acc. to Falkow Broth	PW 3026	50 x 5 ml
	Modified Motility LAB-AGAR™	PW 3096	50 x 5 ml
	Motility LAB-AGAR™	PW 3023	50 x 5 ml
	Simmons Citrate LAB-AGAR™	PW 3058	50 x 5 ml (slant)
	Tryptophan Culture Broth	PW 3012	50 x 5 ml
	Urea Christensen Broth	PW 3006	50 x 5 ml

EN ISO 6888-1:2001.

Microbiology of food and animal feeding stuffs- Horizontal method for the enumeration of coagulase-positive staphylococci (Staphylococcus aureus and other species) - Part 1:

Technique using Baird - Parker agar medium

Microbiologie des aliments - Méthode horizontale de dénombrement des staphylocoques coagulase positive (Staphylococcus aureus et autres esp ces) - Partie no 1: Technique utilisant le milieu agar Baird-Parker

Steps	Description	Cat. No.	Package
Initial suspension	Saline Peptone Water	PS 118	500 g
	Saline Peptone Water	BT 5094.01	6 x 100 ml
	Saline Peptone Water	BT 5094.02	6 x 200 ml
	Saline Peptone Water	BT 5094.05	6 x 500 ml
	Saline Peptone Water	BT 5027	6 x 90 ml
	Saline Peptone Water GRAVI LAB-BAG™	WR 0008	1 x 3 L
	Saline Peptone Water GRAVI LAB-BAG™	WR 0009	1 x 5 L
	Saline Peptone Water (SLW) DRYGravi LAB-BAG™	DGB 05	1 x 20 L
	Saline Peptone Water (SLW) DRYGravi LAB-BAG™	DGB 07	1 x 10 L
	SLW DRYGravi LAB-BAG™	DVT 005	1 x 20 L + filter unit
	SLW DRYGravi LAB-BAG™	DVT 007	1 x 10 L + filter unit
	Saline Peptone Water	PW 3055	50 x 9 ml
	Isolation	Baird Parker LAB-AGAR™ Base acc. to ISO 6888-1	PS 33
Egg`s Yolk Tellurite Sterile Emulsion		SL 0036	100 ml
Baird Parker LAB-AGAR™ Base		BT 5033.01	6 x 100 ml
Baird Parker LAB-AGAR™ Base		BT 5033.02	6 x 200 ml
Baird Parker LAB-AGAR™ Base		BT 5033.05	6 x 500 ml
Baird Parker LAB-AGAR™		PP 1320	10 plates
Confirmation	Brain Heart Infusion Broth	PS 04	500 g
	Brain Heart Infusion Broth	BT 5008.01	6 x 100 ml
	Brain Heart Infusion Broth	BT 5008.02	6 x 200 ml
	Brain Heart Infusion Broth	BT 5008.05	6 x 500 ml
	Brain Heart Infusion Broth	PW 4202	50 x 3 ml
	Rabbit Coagulase Plasma	PL 850-3	10 x 3 ml

EN ISO 6888-2:2001..

Microbiology of food and animal feeding stuffs- Horizontal method for the enumeration of coagulase-positive staphylococci (Staphylococcus aureus and other species) - Part 2: Technique using rabbit plasma fibrinogen agar medium

Microbiologie des aliments - Méthode horizontale pour le dénombrement des staphylocoques coagulase positive (Staphylococcus aureus et autres espèces) - Partie no 2: Technique utilisant un milieu de agar fibrinogène de plasma de lapin

Steps	Description	Cat. No.	Package
Initial suspension	Saline Peptone Water	PS 118	500 g
	Saline Peptone Water	BT 5094.01	6 x 100 ml
	Saline Peptone Water	BT 5094.02	6 x 200 ml
	Saline Peptone Water	BT 5094.05	6 x 500 ml
	Saline Peptone Water	BT 5027	6 x 90 ml
	Saline Peptone Water GRAVI LAB-BAG™	WR 0008	1 x 3 L
	Saline Peptone Water GRAVI LAB-BAG™	WR 0009	1 x 5 L
	Saline Peptone Water (SLW) DRYGravi LAB-BAG™	DGB 05	1 x 20 L
	Saline Peptone Water (SLW) DRYGravi LAB-BAG™	DGB 07	1 x 10 L
	SLW DRYGravi LAB-BAG™	DVT 005	1 x 20 L + filter unit
	SLW DRYGravi LAB-BAG™	DVT 007	1 x 10 L + filter unit
	Saline Peptone Water	PW 3055	50 x 9 ml
	Isolation	Baird Parker LAB-AGAR™ Base acc. to ISO 6888-2	PS 164
RPF Supplement		SL 0034	10 vials 1/500 ml
Baird Parker (RPF) LAB-AGAR™ Base		BT 5037	6 x 90 ml
Baird Parker RPF LAB-AGAR™		PP 0080	10 plates

EN ISO 6888-3:2004.

Microbiology of food and animal feeding stuffs - Horizontal method for the enumeration of coagulase – positive staphylococci (Staphylococcus aureus and other species) - Part 3. Detection and MPN technique for low numbers

Microbiologie des aliments - Méthode horizontale de dénombrement des staphylocoques coagulase positive (Staphylococcus aureus et autres espèces) - Partie no 3. Détection et technique NPP pour les petits nombres

Steps	Description	Cat. No.	Package
Selective propagation	Giolitti Cantoni with Polysorbate Broth	PS 148	500 g
	Potassium Tellurite Solution 1 %	SL 0031	100 ml
Confirmation	Baird Parker LAB-AGAR™ Base acc. to ISO 6888-1	PS 33	500 g
	Egg's Yolk Tellurite Sterile Emulsion	SL 0036	100 ml
	Baird Parker LAB-AGAR™ Base	BT 5033.01	6 x 100 ml
	Baird Parker LAB-AGAR™ Base	BT 5033.02	6 x 200 ml
	Baird Parker LAB-AGAR™ Base	BT 5033.05	6 x 500 ml
	Baird Parker LAB-AGAR™ Base	PP 1320	10 plates
	Brain Heart Infusion Broth	PS 04	500 g
	Brain Heart Infusion Broth	BT 5008.01	6 x 100 ml
	Brain Heart Infusion Broth	BT 5008.02	6 x 200 ml
	Brain Heart Infusion Broth	BT 5008.05	6 x 500 ml
	Brain Heart Infusion Broth	PW 4202	50 x 3 ml
	Rabbit Coagulase Plasma	PL. 850-3	10 x 3 ml

ISO 4831: 2007.

Microbiology of food and animal feeding stuffs - Horizontal method for the detection and enumeration of coliforms - Most probable number technique

Microbiologie des aliments - Méthode horizontale pour la détection et le dénombrement des coliformes - Technique du nombre le plus probable

Steps	Description	Cat. No.	Package
Selective propagation	Lauryl Sulfate Broth	PS 56	500 g
Confirmation	Brilliant Green Bile Broth 2 %	PS 27	500 g

ISO 7251:2002.

Microbiology-General guidance for enumeration of presumptive Escherichia coli. Most probable number technique

Microbiologie-Guide général pour le dénombrement des Escherichia coli présumés. Technique du nombre le plus probable

Steps	Description	Cat. No.	Package
Selective propagation	Lauryl Sulfate Broth	PS 56	500 g
	EC Medium	PS 51	500 g
Confirmation	Tryptone Water	PS 201	500 g
	Tryptone Water	BT 5112.01	6 x 100 ml
	Tryptone Water	BT 5112.02	6 x 200 ml
	Tryptone Water	BT 5112.05	6 x 500 ml

ISO 21528-1: 2017.

Microbiology of the food chain. Horizontal method for the detection and enumeration of Enterobacteriaceae. Part 1: Detection of Enterobacteriaceae

Microbiologie de la chaîne alimentaire. Méthode horizontale pour la détection et le dénombrement des Enterobacteriaceae. Partie no 1: Détection d'Enterobacteriaceae

Steps	Description	Cat. No.	Package
Enrichment	Buffered Peptone Water	PS 52	500 g
	Buffered Peptone Water	BT 5016.01	6 x 100 ml
	Buffered Peptone Water	BT 5016.02	6 x 200 ml
	Buffered Peptone Water	BT 5016.05	6 x 500 ml
	Buffered Peptone Water	BT 5020	6 x 225 ml
	Buffered Peptone Water	BT 5171	6 x 90 ml
	Buffered Peptone Water (BPW) acc. to ISO 6579-1 DRYGravi LAB-BAG™	DGB 01	1 x 20 L
	Buffered Peptone Water (BPW) acc. to ISO 6579-1 DRYGravi LAB-BAG™	DGB 03	1 x 10 L
	Buffered Peptone Water GRAVI LAB-BAG™	WR 0006	1 x 3 L
	Buffered Peptone Water GRAVI LAB-BAG™	WR 0005	1 x 5 L
Selective isolation	Violet Red Bile with Glucose LAB-AGAR™	PS 73	500 g
	VRBG LAB-AGAR™	BT 5158.01	6 x 100 ml
	VRBG LAB-AGAR™	BT 5158.02	6 x 200 ml
	VRBG LAB-AGAR™	BT 5158.05	6 x 500 ml
Confirmation	VRBG LAB-AGAR™	PP 1341	10 plates
	BCP LAB-AGAR™	PS 154	500 g
	Glucose OF Medium	PS 268	500 g
	Glucose OF Medium	BT 5240.01	6 x 100 ml
	Glucose OF Medium	BT 5240.02	6 x 200 ml
	Glucose OF Medium	BT 5240.05	6 x 500 ml
	Glucose OF Medium	PW 3228	50 x 10 ml
	Glucose OF Medium	PW 3229	50 x 5 ml
Confirmation	Nutrient LAB-AGAR™ acc. to ISO 21528	PS 166	500 g
	Nutrient LAB-AGAR™ acc. to ISO 21528	PP 0057	10 plates

ISO 21528-2:2017.

Microbiology of the food chain - Horizontal method for the detection and enumeration of Enterobacteriaceae - Part 2: Colony-count technique

Microbiologie de la chaîne alimentaire - Méthode horizontale pour la détection et le dénombrement des Enterobacteriaceae - Partie no 2: Technique de comptage des colonies

Steps	Description	Cat. No.	Package
Initial suspension	Saline Peptone Water	PS 118	500 g
	Saline Peptone Water	BT 5094.01	6 x 100 ml
	Saline Peptone Water	BT 5094.02	6 x 200 ml
	Saline Peptone Water	BT 5094.05	6 x 500 ml
	Saline Peptone Water	BT 5027	6 x 90 ml
	Saline Peptone Water GRAVI LAB-BAG™	WR 0008	1 x 3 L
	Saline Peptone Water GRAVI LAB-BAG™	WR 0009	1 x 5 L
	Saline Peptone Water (SLW) DRYGravi LAB-BAG™	DGB 05	1 x 20 L
	Saline Peptone Water (SLW) DRYGravi LAB-BAG™	DGB 07	1 x 10 L
	SLW DRYGravi LAB-BAG™	DVT 005	1 x 20 L + filter unit
	SLW DRYGravi LAB-BAG™	DVT 007	1 x 10 L + filter unit
	Saline Peptone Water	PW 3055	50 x 9 ml
	Isolation	Violet Red Bile with Glucose LAB-AGAR™	PS 73
VRBG LAB-AGAR™		BT 5158.01	6 x 100 ml
VRBG LAB-AGAR™		BT 5158.02	6 x 200 ml
VRBG LAB-AGAR™		BT 5158.05	6 x 500 ml
VRBG LAB-AGAR™		PP 1341	10 plates
Confirmation	BCP LAB-AGAR™	PS 154	500 g
	Glucose OF Medium	PS 268	500 g
	Glucose OF Medium	BT 5240.01	6 x 100 ml
	Glucose OF Medium	BT 5240.02	6 x 200 ml
	Glucose OF Medium	BT 5240.05	6 x 500 ml
	Glucose OF Medium	PW 3228	50 x 10 ml
	Glucose OF Medium	PW 3229	50 x 5 ml
	Nutrient LAB-AGAR™ acc. to ISO 21528	PS 166	500 g
Nutrient LAB-AGAR™ acc. to ISO 21528	PP 0057	10 plates	

ISO/TS 22964:2017.

Microbiology of the food chain. Horizontal method for the detection of Cronobacter spp

Microbiologie de la chaîne alimentaire. Méthode horizontale pour la détection de Cronobacter spp

Steps	Description	Cat. No.	Package
Sample preparation	Buffered Peptone Water	BT 5016.01	6 x 100 ml
	Buffered Peptone Water	BT 5016.02	6 x 200 ml
	Buffered Peptone Water	BT 5016.05	6 x 500 ml
	Buffered Peptone Water	BT 5020	6 x 225 ml
	Buffered Peptone Water	BT 5171	6 x 90 ml
	Buffered Peptone Water (BPW) acc. to ISO 6579-1 DRYGravi LAB-BAG™	DGB 01	1 x 20 L
	Buffered Peptone Water (BPW) acc. to ISO 6579-1 DRYGravi LAB-BAG™	DGB 03	1 x 10 L
	Buffered Peptone Water GRAVI LAB-BAG™	WR 0006	1 x 3 L
	Buffered Peptone Water GRAVI LAB-BAG™	WR 0005	1 x 5 L
	Selective enrichment	Cronobacter Selective Broth (CSB)	PS 276
Vancomycin Supplement		SL 0059	10 vial 1/500 ml
Cronobacter Selective Broth (CSB)		BT 5247.01	6 x 100 ml
Cronobacter Selective Broth (CSB)		BT 5247.02	6 x 200 ml
Cronobacter Selective Broth (CSB)		BT 5247.05	6 x 500 ml
Cronobacter Selective Broth (CSB)		PW 3233	50 x 10 ml

ISO/TS 22964:2017.

Microbiology of the food chain. Horizontal method for the detection of Cronobacter spp

Microbiologie de la chaîne alimentaire. Méthode horizontale pour la détection de Yersinia enterocolitica pathog ne

Steps	Description	Cat. No.	Package
Selective isolation	Chromogenic Cronobacter Isolation (CCI) LAB-AGAR™	PS 284	500 g
	Chromogenic Cronobacter Isolation (CCI) LAB-AGAR™	BT 5246.01	6 x 100 ml
	Chromogenic Cronobacter Isolation (CCI) LAB-AGAR™	BT 5246.02	6 x 200 ml
	Chromogenic Cronobacter Isolation (CCI) LAB-AGAR™	BT 5246.05	6 x 500 ml
	Chromogenic Cronobacter Isolation (CCI) LAB-AGAR™	PP 0177	10 plates
Confirmation	Trypticasein Soy LAB-AGAR™	PS 22	500 g
	Trypticasein Soy LAB-AGAR™	BT 5000.01	6 x 100 ml
	Trypticasein Soy LAB-AGAR™	BT 5000.02	6 x 200 ml
	Trypticasein Soy LAB-AGAR™	BT 5000.05	6 x 500 ml
	Trypticasein Soy LAB-AGAR™	PP 1180	10 plates

EN-ISO 10273:2017

Microbiology of the food chain. Horizontal method for the detection of pathogenic Yersinia enterocolitica

Microbiologie de la chaîne alimentaire. Méthode horizontale pour la détection de Yersinia enterocolitica pathog ne

Steps	Description	Cat. No.	Package
Selective propagation	ITC Broth Base	PS 169	500 g
	ITC Selective Supplement	SL 0015	10 vials 1/500 ml
	ITC Broth	BT 5169.01	6 x 100 ml
	ITC Broth	BT 5169.02	6 x 200 ml
	Sorbitol Peptone with Bile Salts	PS 63	500 g
	Sorbitol Peptone with Bile Salts	BT 5077.01	6 x 100 ml
	Sorbitol Peptone with Bile Salts	BT 5077.02	6 x 200 ml
Selective isolation	Sorbitol Peptone with Bile Salts	BT 5077.05	6 x 500 ml
	Yersinia Selective LAB-AGAR™ Base	PS 145	500 g
	Yersinia CIN Selective Supplement	SL 0044	10 vials 1/500 ml
	Yersinia CIN LAB-AGAR™	BT 5035.01	6 x 100 ml
	Yersinia CIN LAB-AGAR™	BT 5035.02	6 x 200 ml
Confirmation	Yersinia CIN LAB-AGAR™	BT 5035.05	6 x 500 ml
	Yersinia CIN LAB-AGAR™	PP 1090	10 plates
	Arginine acc. to Falkow Broth	BT 5049.01	6 x 100 ml
	Arginine acc. to Falkow Broth	BT 5049.02	6 x 200 ml
	Arginine acc. to Falkow Broth	BT 5049.05	6 x 500 ml
	Arginine acc. to Falkow Broth	PW 3184	50 x 3 ml
	Arginine acc. to Falkow Broth	PW 3048	50 x 5 ml
	Bile Esculin LAB-AGAR™	PS 155	500 g
	Bile Esculin LAB-AGAR™	PP 0019	10 plates
	Bile Esculin LAB-AGAR™	PW 3104	50 x 3 ml (slant)
CR-MOX LAB-AGAR™	PP 0176	10 plates	
Esterase Tween LAB-AGAR™ Base	PS 599	500 g	
Tween	TWS 80100	100 ml	

Steps	Description	Cat. No.	Package
	Esterase Tween LAB-AGAR™	BT 5230.01	6 x100 ml
	Ksylose Broth	PW 3021	50 x 5 ml
	Lysine acc. to Falkow Broth	PW 3026	50 x 5 ml
	Lysine acc. to Falkow Broth	PW 3102	50 x 3 ml
	Melibiose Broth (ISO 10273)	BT 5242.01	6 x 100 ml
	Melibiose Broth (ISO 10273)	BT 5242.02	6 x 200 ml
	Melibiose Broth (ISO 10273)	BT 5242.05	6 x 500 ml
	Melibiose Broth (ISO 10273)	PW 3231	50 x 5 ml
	Nutrient LAB-AGAR™ acc. to ISO 21528: ISO 10273	PS 166	500 g
	Nutrient LAB-AGAR™ acc. to ISO 21528: ISO 10273	PP 0057	10 plates
	Phenol Red Broth Base	PS 191	500 g
	Phenylalanine LAB-AGAR™	PW 3061	50 x 5 ml (slant)
	Phenylalanine LAB-AGAR™	PW 3119	50 x 3 ml (slant)
	Phenylalanine LAB-AGAR™	BT 5231.01	6 x 100 ml
	Ramnose Broth	PW 3013	50 x 5 ml
	Simmons Citrate LAB-AGAR™	PW 3058	50 x 5 ml (slant)
	0,9 % Sodium Chloride	PW 3087	50 x 1 ml
	0,9 % Sodium Chloride	PW 3150	50 x 2 ml
	0,9 % Sodium Chloride	PW 3088	50 x 3 ml
	0,9 % Sodium Chloride	PW 3054	50 x 5 ml
	0,9 % Sodium Chloride	BT 5045.01	6 x 100 ml
	0,9 % Sodium Chloride	BT 5045.02	6 x 200 ml
	0,9 % Sodium Chloride	BT 5045.05	6 x 500 ml
	Trehalose Broth (ISO 10273)	PW 3230	50 x 5 ml
	Trehalose Broth (ISO 10273)	BT 5241.01	6 x 100 ml
	Trehalose Broth (ISO 10273)	BT 5241.02	6 x 200 ml
	Trehalose Broth (ISO 10273)	BT 5241.05	6 x 500 ml
	Trypticasein Soy Broth	PW 3101	50 x 3 ml
	Trypticasein Soy Broth	PW 4000	50 x 5 ml
	Trypticasein Soy Broth	PW 4019	50 x 10 ml
	Tryptophan Culture Broth	PS 132	500 g
	Tryptophan Culture Broth	PW 3178	50 x 2 ml
	Tryptophan Culture Broth	PW 3098	50 x 3 ml
	Tryptophan Culture Broth	PW 3012	50 x 5 ml
	Tryptophan Culture Broth	BT 5030.01	6 x 100 ml
	Tryptophan Culture Broth	BT 5030.02	6 x 200 ml
	Tryptophan Culture Broth	BT 5030.05	6 x 500 ml
	Urea LAB-AGAR™ Base acc. to ISO 6579	PS 211	500 g
	Urea Sterile Solution 40 %	SL 0041	100 ml
	Urea Sterile Solution 40 %	SL 0111	10 x 5 ml
	Urea LAB-AGAR™	PW 4233	10 x 5 ml (slant)

ISO 15214:2002.

Microbiology of food and animal feeding stuffs- Horizontal method the enumeration of mesophilic lactic acid bacteria- Colony-count technique at 30°C

Microbiologie des aliments - Méthode horizontale le dénombrement des bactéries lactiques mésophiles - Méthode de comptage des colonies 30°C

Steps	Description	Cat. No.	Package	
Initial suspension	Saline Peptone Water	PS 118	500 g	
	Saline Peptone Water	BT 5094.01	6 x 100 ml	
	Saline Peptone Water	BT 5094.02	6 x 200 ml	
	Saline Peptone Water	BT 5094.05	6 x 500 ml	
	Saline Peptone Water	BT 5027	6 x 90 ml	
	Saline Peptone Water GRAVI LAB-BAG™	WR 0008	1 x 3 L	
	Saline Peptone Water GRAVI LAB-BAG™	WR 0009	1 x 5 L	
	Saline Peptone Water (SLW) DRYGravi LAB-BAG™	DGB 05	1 x 20 L	
	Saline Peptone Water (SLW) DRYGravi LAB-BAG™	DGB 07	1 x 10 L	
	SLW DRYGravi LAB-BAG™	DVT 005	1 x 20 L + filter unit	
	SLW DRYGravi LAB-BAG™	DVT 007	1 x 10 L + filter unit	
	Saline Peptone Water	PW 3055	50 x 9 ml	
	Isolation	MRS LAB-AGAR™	PS 59	500 g
		MRS LAB-AGAR™	BT 5031.01	6 x 100 ml
MRS LAB-AGAR™		BT 5031.02	6 x 200 ml	
MRS LAB-AGAR™		BT 5031.05	6 x 500 ml	
MRS LAB-AGAR™		PP 0023	10 plates	
MRS LAB-AGAR™ pH 5,7		PS 271	500 g	
MRS LAB-AGAR™ pH 5,7		BT 5210.01	6 x 100 ml	
MRS LAB-AGAR™ pH 5,7		BT 5210.02	6 x 200 ml	

EN ISO 7932:2004.

Microbiology of food and animal feeding stuffs – Horizontal method for the enumeration of presumptive Bacillus cereus- Colony-count technique at 30°C

Microbiologie des aliments - Méthode horizontale pour le dénombrement de Bacillus cereus présumés - Technique de comptage des colonies 30°C

Steps	Description	Cat. No.	Package	
Initial suspension	Saline Peptone Water	PS 118	500 g	
	Saline Peptone Water	BT 5094.01	6 x 100 ml	
	Saline Peptone Water	BT 5094.02	6 x 200 ml	
	Saline Peptone Water	BT 5094.05	6 x 500 ml	
	Saline Peptone Water	BT 5027	6 x 90 ml	
	Saline Peptone Water GRAVI LAB-BAG™	WR 0008	1 x 3 L	
	Saline Peptone Water GRAVI LAB-BAG™	WR 0009	1 x 5 L	
	Saline Peptone Water (SLW) DRYGravi LAB-BAG™	DGB 05	1 x 20 L	
	Saline Peptone Water (SLW) DRYGravi LAB-BAG™	DGB 07	1 x 10 L	
	SLW DRYGravi LAB-BAG™	DVT 005	1 x 20 L + filter unit	
	SLW DRYGravi LAB-BAG™	DVT 007	1 x 10 L + filter unit	
	Saline Peptone Water	PW 3055	50 x 9 ml	
	Isolation	Bacillus cereus Selective LAB-AGAR™ Base	PS 47	500 g
		Egg`s`s`s`s`s`s`s`s`s`s`s`s`s`s` Polimixin Sterile Emulsion	SL 0037	100 ml
Bacillus cereus LAB-AGAR™ Base		BT 5047	6 x 90 ml	
Bacillus cereus LAB-AGAR™		PP 1501	10 plates	
Confirmation		Blood No 2 LAB-AGAR™	PP 0015	10 plates

ISO 4832: 2007.

Microbiology of food and animal feeding stuffs – Horizontal method for the enumeration of coliforms- Colony-count technique

Microbiologie des aliments - Méthode horizontale pour le dénombrement des coliformes - Technique de comptage des colonies

Steps	Description	Cat. No.	Package
Initial suspension	Saline Peptone Water	PS 118	500 g
	Saline Peptone Water	BT 5094.01	6 x 100 ml
	Saline Peptone Water	BT 5094.02	6 x 200 ml
	Saline Peptone Water	BT 5094.05	6 x 500 ml
	Saline Peptone Water	BT 5027	6 x 90 ml
	Saline Peptone Water GRAVI LAB-BAG™	WR 0008	1 x 3 L
	Saline Peptone Water GRAVI LAB-BAG™	WR 0009	1 x 5 L
	Saline Peptone Water (SLW) DRYGravi LAB-BAG™	DGB 05	1 x 20 L
	Saline Peptone Water (SLW) DRYGravi LAB-BAG™	DGB 07	1 x 10 L
	SLW DRYGravi LAB-BAG™	DVT 005	1 x 20 L + filter unit
	SLW DRYGravi LAB-BAG™	DVT 007	1 x 10 L + filter unit
	Saline Peptone Water	PW 3055	50 x 9 ml
	Isolation	Violet Red Bile with Lactose LAB-AGAR™	PS 74
VRBL LAB-AGAR™		BT 5074.01	6 x 100 ml
VRBL LAB-AGAR™		BT 5074.02	6 x 200 ml
VRBL LAB-AGAR™		BT 5074.05	6 x 500 ml
VRBL LAB-AGAR™		PP 1340	10 plates
Confirmation	Brilliant Green Bile Broth 2 %	PS 27	500 g

EN ISO 4833: 2004.

Microbiology of food and animal feeding stuffs – Horizontal method for the enumeration of microorganism- Colony-count technique at 30°C

Microbiologie des aliments - Méthode horizontale pour le dénombrement des microorganismes - Technique de comptage des colonies 30°C

Steps	Description	Cat. No.	Package
Initial suspension	Saline Peptone Water	PS 118	500 g
	Saline Peptone Water	BT 5094.01	6 x 100 ml
	Saline Peptone Water	BT 5094.02	6 x 200 ml
	Saline Peptone Water	BT 5094.05	6 x 500 ml
	Saline Peptone Water	BT 5027	6 x 90 ml
	Saline Peptone Water GRAVI LAB-BAG™	WR 0008	1 x 3 L
	Saline Peptone Water GRAVI LAB-BAG™	WR 0009	1 x 5 L
	Saline Peptone Water (SLW) DRYGravi LAB-BAG™	DGB 05	1 x 20 L
	Saline Peptone Water (SLW) DRYGravi LAB-BAG™	DGB 07	1 x 10 L
	SLW DRYGravi LAB-BAG™	DVT 005	1 x 20 L + filter unit
	SLW DRYGravi LAB-BAG™	DVT 007	1 x 10 L + filter unit
	Saline Peptone Water	PW 3055	50 x 9 ml
	Isolation	Standards Methods (Plate Count Agar) LAB-AGAR™	PS 37
Plate Count Agar LAB-AGAR™		BT 5115.01	6 x 100 ml
Plate Count Agar LAB-AGAR™		BT 5115.02	6 x 200 ml
Plate Count Agar LAB-AGAR™		BT 5115.05	6 x 500 ml
Plate Count Agar LAB-AGAR™		PP 1311	10 plates
Standard Methods with Powdered Milk LAB-AGAR™		PS 38	500 g
Plate Count with Milk LAB-AGAR™		BT 5004.01	6 x 100 ml
Plate Count with Milk LAB-AGAR™		BT 5004.02	6 x 200 ml
Plate Count with Milk LAB-AGAR™		BT 5004.05	6 x 500 ml
Plate Count with Milk LAB-AGAR™	PP 1312	10 plates	

ISO 16649-2.

Microbiology of food and animal feeding stuffs – Horizontal method for the enumeration of β -glucuronidase – positive Escherichia coli.

Part 2: Colony – count technique at 44°C using 5-bromo-4chloro-3-indoksył β -D-glucuronide

Microbiologie des aliments - Méthode horizontale de dénombrement d'Escherichia coli β -glucuronidase positive. Partie no 2: Technique de comptage des colonies 44 °C en utilisant du β -D-glucuronide de 5-bromo-4chloro-3-indoksył

Steps	Description	Cat. No.	Package
Initial suspension	Saline Peptone Water	PS 118	500 g
	Saline Peptone Water	BT 5094.01	6 x 100 ml
	Saline Peptone Water	BT 5094.02	6 x 200 ml
	Saline Peptone Water	BT 5094.05	6 x 500 ml
	Saline Peptone Water	BT 5027	6 x 90 ml
	Saline Peptone Water GRAVI LAB-BAG™	WR 0008	1 x 3 L
	Saline Peptone Water GRAVI LAB-BAG™	WR 0009	1 x 5 L
	Saline Peptone Water (SLW) DRYGravi LAB-BAG™	DGB 05	1 x 20 L
	Saline Peptone Water (SLW) DRYGravi LAB-BAG™	DGB 07	1 x 10 L
	SLW DRYGravi LAB-BAG™	DVT 005	1 x 20 L + filter unit
	SLW DRYGravi LAB-BAG™	DVT 007	1 x 10 L + filter unit
	Saline Peptone Water	PW 3055	50 x 9 ml
	Isolation	(TBX) Tryptone Bile X-glucuronide LAB-AGAR™	PS 135
TBX LAB-AGAR™		BT 5135.01	6 x 100 ml
TBX LAB-AGAR™		BT 5135.02	6 x 200 ml
TBX LAB-AGAR™		BT 5135.05	6 x 500 ml
TBX LAB-AGAR™		PP 0100	10 plates

ISO 21527-1:2009

Microbiology of food and animal feeding stuffs- Horizontal method for the enumeration of yeasts and moulds - Part 1: Colony count technique in products with water activity greater than 0,95

Microbiologie des aliments - Méthode horizontale de dénombrement des levures et des moisissures - Partie no 1: Technique de comptage des colonies dans les produits dont l'activité de l'eau est supérieure 0,95

Steps	Description	Cat. No.	Package
Initial suspension	Saline Peptone Water	PS 118	500 g
	Saline Peptone Water	BT 5094.01	6 x 100 ml
	Saline Peptone Water	BT 5094.02	6 x 200 ml
	Saline Peptone Water	BT 5094.05	6 x 500 ml
	Saline Peptone Water	BT 5027	6 x 90 ml
	Saline Peptone Water GRAVI LAB-BAG™	WR 0008	1 x 3 L
	Saline Peptone Water GRAVI LAB-BAG™	WR 0009	1 x 5 L
	Saline Peptone Water (SLW) DRYGravi LAB-BAG™	DGB 05	1 x 20 L
	Saline Peptone Water (SLW) DRYGravi LAB-BAG™	DGB 07	1 x 10 L
	SLW DRYGravi LAB-BAG™	DVT 005	1 x 20 L + filter unit
	SLW DRYGravi LAB-BAG™	DVT 007	1 x 10 L + filter unit
	Saline Peptone Water	PW 3055	50 x 9 ml
	Isolation	DRBC LAB-AGAR™	PS 136
DRBC LAB-AGAR™		BT 5113.01	6 x 100 ml
DRBC LAB-AGAR™		BT 5113.02	6 x 200 ml
DRBC LAB-AGAR™		PP 0078	10 plates

ISO 21527-2:2009

Microbiology of food and animal feeding stuffs- Horizontal method for the enumeration of yeasts and moulds – Part 2: Colony count technique in products with water activity less than or equal 0,95

Microbiologie des aliments - Méthode horizontale pour le dénombrement des levures et moisissures - Partie no 2: Technique de comptage des colonies dans les produits dont l'activité de l'eau est inférieure ou égale 0,95

Steps	Description	Cat. No.	Package
Initial suspension	Saline Peptone Water	PS 118	500 g
	Saline Peptone Water	BT 5094.01	6 x 100 ml
	Saline Peptone Water	BT 5094.02	6 x 200 ml
	Saline Peptone Water	BT 5094.05	6 x 500 ml
	Saline Peptone Water	BT 5027	6 x 90 ml
	Saline Peptone Water GRAVI LAB-BAG™	WR 0008	1 x 3 L
	Saline Peptone Water GRAVI LAB-BAG™	WR 0009	1 x 5 L
	Saline Peptone Water (SLW) DRYGravi LAB-BAG™	DGB 05	1 x 20 L
	Saline Peptone Water (SLW) DRYGravi LAB-BAG™	DGB 07	1 x 10 L
	SLW DRYGravi LAB-BAG™	DVT 005	1 x 20 L + filter unit
	SLW DRYGravi LAB-BAG™	DVT 007	1 x 10 L + filter unit
	Saline Peptone Water	PW 3055	50 x 9 ml
	Glycerol	GLC 80500	500 ml
	DG 18 LAB-AGAR™	BT 5114.01	6 x 100 ml
	DG 18 LAB-AGAR™	BT 5114.02	6 x 200 ml
	DG 18 LAB-AGAR™	PP 0079	10 plates

ISO 13270.

Meat and meat products. Enumeration of Pseudomonas spp.

Viande et produits base de viande. Énumération de Pseudomonas spp.

Steps	Description	Cat. No.	Package
Initial suspension	Saline Peptone Water	PS 118	500 g
	Saline Peptone Water	BT 5094.01	6 x 100 ml
	Saline Peptone Water	BT 5094.02	6 x 200 ml
	Saline Peptone Water	BT 5094.05	6 x 500 ml
	Saline Peptone Water	BT 5027	6 x 90 ml
	Saline Peptone Water GRAVI LAB-BAG™	WR 0008	1 x 3 L
	Saline Peptone Water GRAVI LAB-BAG™	WR 0009	1 x 5 L
	Saline Peptone Water (SLW) DRYGravi LAB-BAG™	DGB 05	1 x 20 L
	Saline Peptone Water (SLW) DRYGravi LAB-BAG™	DGB 07	1 x 10 L
	SLW DRYGravi LAB-BAG™	DVT 005	1 x 20 L + filter unit
	SLW DRYGravi LAB-BAG™	DVT 007	1 x 10 L + filter unit
	Saline Peptone Water	PW 3055	50 x 9 ml
	Glycerol	GLC 80500	500 ml
	CFC Supplement	SL 0007	10 vials 1/500 ml
	Pseudomonas CFC LAB-AGAR™	BT 5127	6 x 100 ml
	PPA LAB-AGAR™	PP 0112	10 plates
	Confirmation	Nutrient LAB-AGAR™ acc. to EN 12780	PS 156
Nutrient LAB-AGAR™ acc. to EN 12780		BT5184.01	6 x 100 ml
Nutrient LAB-AGAR™ acc. to EN 12780		BT5184.02	6 x 200 ml
Nutrient LAB-AGAR™ acc. to EN 12780		PP 0058	10 plates
Kligler Iron LAB-AGAR™		PW 3057	50 x 5 ml (slant)

ISO 15213:2005.

Microbiology of food and animal feeding stuffs- Horizontal method for the enumeration of sulfite – reducing bacteria growing under anaerobe conditions

Microbiologie des aliments et des aliments pour animaux - Méthode horizontale pour le dénombrement des bactéries réductrices de sulfites qui poussent dans des conditions anaérobies

Steps	Description	Cat. No.	Package
Initial suspension	Saline Peptone Water	PS 118	500 g
	Saline Peptone Water	BT 5094.01	6 x 100 ml
	Saline Peptone Water	BT 5094.02	6 x 200 ml
	Saline Peptone Water	BT 5094.05	6 x 500 ml
	Saline Peptone Water	BT 5027	6 x 90 ml
	Saline Peptone Water GRAVI LAB-BAG™	WR 0008	1 x 3 L
	Saline Peptone Water GRAVI LAB-BAG™	WR 0009	1 x 5 L
	Saline Peptone Water (SLW) DRYGravi LAB-BAG™	DGB 05	1 x 20 L
	Saline Peptone Water (SLW) DRYGravi LAB-BAG™	DGB 07	1 x 10 L
	SLW DRYGravi LAB-BAG™	DVT 005	1 x 20 L + filter unit
	SLW DRYGravi LAB-BAG™	DVT 007	1 x 10 L + filter unit
	Saline Peptone Water	PW 3055	50 x 9 ml
	Isolation	TSC LAB-AGAR™	PS 96
TSC Supplement		SL 0008	10 vials 1/500 ml
TSC LAB-AGAR™		BT 5098.01	6 x 100 ml
TSC LAB-AGAR™		BT 5098.02	6 x 200 ml
TSC LAB-AGAR™		BT 5098.05	6 x 500 ml
TSC LAB-AGAR™		PP 1096	10 plates

EN ISO 7937:2005.

Microbiology of food and animal feeding stuffs - Horizontal method for the enumeration of Clostridium perfringens. Colony-count technique

Microbiologie des aliments et des aliments pour animaux - Méthode horizontale pour le dénombrement de Clostridium perfringens. Technique de comptage des colonies

Steps	Description	Cat. No.	Package
Initial suspension	Saline Peptone Water	PS 118	500 g
	Saline Peptone Water	BT 5094.01	6 x 100 ml
	Saline Peptone Water	BT 5094.02	6 x 200 ml
	Saline Peptone Water	BT 5094.05	6 x 500 ml
	Saline Peptone Water	BT 5027	6 x 90 ml
	Saline Peptone Water GRAVI LAB-BAG™	WR 0008	1 x 3 L
	Saline Peptone Water GRAVI LAB-BAG™	WR 0009	1 x 5 L
	Saline Peptone Water (SLW) DRYGravi LAB-BAG™	DGB 05	1 x 20 L
	Saline Peptone Water (SLW) DRYGravi LAB-BAG™	DGB 07	1 x 10 L
	SLW DRYGravi LAB-BAG™	DVT 005	1 x 20 L + filter unit
	SLW DRYGravi LAB-BAG™	DVT 007	1 x 10 L + filter unit
	Saline Peptone Water	PW 3055	50 x 9 ml
	Isolation	TSC LAB-AGAR™	PS 96
TSC Supplement		SL 0008	10 vials 1/500 ml
TSC LAB-AGAR™		BT 5098.01	6 x 100 ml
TSC LAB-AGAR™		BT 5098.02	6 x 200 ml
TSC LAB-AGAR™		BT 5098.05	6 x 500 ml
TSC LAB-AGAR™		PP 1096	10 plates
Confirmation	Thioglycollate Fluid Medium	PS 43	500 g
	Thioglycollate Fluid Medium	BT 5128.01	6 x 100 ml
	Thioglycollate Fluid Medium	BT 5128.02	6 x 200 ml
	Thioglycollate Fluid Medium	BT 5128.05	6 x 500 ml
	Thioglycollate Fluid Medium	PW 3033	50 x 5 ml

Steps	Description	Cat. No.	Package
	Lactose Sulfite Broth Base	PS 162	500 g
	Gelatin Lactose Medium	PS 112	500 g
	Motility Nitrate Medium Base	PS 115	500 g
	Glycerol	GLC 80500	500 ml

Media specially designed for beer industry

Supports spécialement conçus pour l'industrie de la bière

Steps	Media	Cat. No.	Package
Beer industry processes / Differentiation	SDA / LMDA MEDIUM	PS 317	500 g
Beer industry processes / Fermentation Control	Universal Beer (UBA) LAB-AGAR™	PS 264	500 g
Beer industry processes / Fermentation Control	WL Nutrient Broth	PS 1020E	500 g
Beer industry processes / Fermentation Control	WL Nutrient LAB -AGAR™	PS 97	500 g
Beer industry processes / Selective Detection	NOCIVE BREWERS BACTERIA LAB -AGAR™ BASE MODIFIED	PS 315	500 g
Beer industry processes / Selective Detection	NOCIVE BREWERS BACTERIA BROTH BASE MODIFIED	PS 480	500 g
E coli, Enterobacteria Identification / Differentiation	SIM MEDIUM	PS 401	500 g
E coli, Enterobacteria Identification / Differentiation	Triple Sugar Iron LAB -AGAR™	PS 44	500 g
E coli, Enterobacteria Identification / Differentiation	Triple Sugar Iron LAB -AGAR™	PW 3193	50 x 9 ml
E coli, Enterobacteria Identification / Differentiation	Triple Sugar Iron LAB -AGAR™	BT 5317.01	100 ml
E coli, Enterobacteria Identification / Differentiation	Triple Sugar Iron LAB -AGAR™	BT 5317.02	200 ml
E coli, Enterobacteria Identification / Differentiation	Triple Sugar Iron LAB -AGAR™	BT 5317.05	500 ml
Enterobacteria Isolation / Differentiation	EOSIN METHYLENE BLUE LAB -AGAR™	PS 41	500 g
Enterobacteria Isolation / Differentiation	EOSIN METHYLENE BLUE LAB -AGAR™	PP 1011	10 plates
Enterobacteria Isolation / Differentiation	EOSIN METHYLENE BLUE LAB -AGAR™	BT 5001.01	100 ml
Enterobacteria Isolation / Differentiation	EOSIN METHYLENE BLUE LAB -AGAR™	BT 5001.02	200 ml
Enterobacteria Isolation / Differentiation	EOSIN METHYLENE BLUE LAB -AGAR™	BT 5001.05	500 ml
Enterobacteria Isolation / Identification	Mac Conkey LAB -AGAR™	PS 10	500 g
Enterobacteria Isolation / Identification	Mac Conkey LAB -AGAR™	PP 1017	10 plates
Enterobacteria Isolation / Identification	Mac Conkey LAB -AGAR™	BT 5010.01	100 ml
Enterobacteria Isolation / Identification	Mac Conkey LAB -AGAR™	BT 5010.02	200 ml
Enterobacteria Isolation / Identification	Mac Conkey LAB -AGAR™	BT 5010.05	500 ml
Lactic acid bacteria / Selective isolation	Raka-Ray LAB -AGAR™ Base	PS 120	500 g
Yeast & Molds Cultivation / Selective Isolation	Rose Bengal LAB -AGAR™	PS 66	500 g
Yeast & Molds Cultivation	Malt Extract LAB -AGAR™	PS 77	500 g
Yeast & Molds Cultivation	Malt Extract LAB -AGAR™	PP 0090	10 plates
Yeast & Molds Cultivation	Malt Extract LAB -AGAR™	BT 5133.01	100 ml
Yeast & Molds Cultivation	Malt Extract LAB -AGAR™	BT 5133.02	200 ml
Yeast & Molds Cultivation	Malt Extract LAB -AGAR™	BT 5133.05	500 ml
Yeast & Molds Cultivation	Potato Dextrose Broth	PS 231	500 g
Yeast & Molds Isolation / Enumeration	Malt Extract Btoth	PS 78	500 g
Yeast & Molds Cultivation / Enumeration	Wort LAB -AGAR™	PS 81	500 g
Yeast & Molds Cultivation / Enumeration	Wort LAB -AGAR™	PP 0181	10 plates
Yeast & Molds Cultivation / Enumeration	Wort LAB -AGAR™	BT 5186.01	100 ml
Yeast & Molds Cultivation / Enumeration	Wort LAB -AGAR™	BT 5186.02	200 ml
Yeast & Molds Cultivation / Enumeration	Wort LAB -AGAR™	BT 5186.05	500 ml
Yeast & Molds Enumeration	Wort Broth	PS 218	500 g

Diluents
Diluents

Products	Cat. No.	Package
Buffered Peptone Water	PS 52	500 g
Buffered Peptone Water	BT 5016.01	6 x 100 ml
Buffered Peptone Water	BT 5016.02	6 x 200 ml
Buffered Peptone Water	BT 5016.05	6 x 500 ml
Buffered Peptone Water	BT 5020	6 x 225 ml
Buffered Peptone Water	BT 5171	6 x 90 ml
Buffered Peptone Water	PW 3093	50 x 9 ml
Buffered Peptone Water (transport tube)	PW 3093.T	50 x 6 ml
Buffered Peptone Water (BPW) DRYGravi LAB-BAG™	DGB 01	1 x 20 L
Buffered Peptone Water (BPW) DRYGravi LAB-BAG™	DGB 03	1 x 10 L
Buffered Peptone Water GRAVI LAB-BAG™	WR 0006	1 x 3 L
Buffered Peptone Water GRAVI LAB-BAG™	WR 0005	1 x 5 L
BWP DRYGravi LAB-BAG™	DVT 001	1 x 20 L + filter unit
BWP DRYGravi LAB-BAG™	DVT 003	1 x 10 L + filter unit
Phosphate Buffered Saline (PBS)	BT 5105.02	6 x 200 ml
Phosphate Buffered Saline (PBS)	BT 5105.05	6 x 500 ml
Phosphate Buffered Saline (PBS)	PW3170	50 x 1,5 ml
Distilled Water	BT 5172.01	6 x 100 ml
Distilled Water	BT 5172.02	6 x 200 ml
Distilled Water	PW 3089	50 x 1 ml
Distilled Water	PW 3090	50 x 3 ml
Distilled Water	PW 3091	50 x 5 ml
Distilled Water	PW 3160	5 x 10 ml
Physiological saline + 0,1 % Tween 80	BT 5203.01	6 x 100 ml
Physiological saline + 0,1 % Tween 80	BT 5203.02	6 x 200 ml
Ringer Solution	BT 5132	6 x 90 ml
Ringer Solution	BT 6000	6 x 180 ml
Ringer Solution	BT 5140.01	6 x 100 ml
Ringer Solution	BT 5140.02	6 x 200 ml
Ringer Solution	BT 5140.05	6 x 500 ml
Ringer Solution	PW 3107	50 x 9 ml
Ringer Solution	PW 3164	50 x 1,5 ml
Ringer Solution GRAVI LAB-BAG™	WR 0015	1 x 5 L
Saline Peptone Water	PS 118	500 g
Saline Peptone Water	BT 5094.01	6 x 100 ml
Saline Peptone Water	BT 5094.02	6 x 200 ml
Saline Peptone Water	BT 5094.05	6 x 500 ml
Saline Peptone Water	BT 5027	6 x 90 ml
Saline Peptone Water	PW 3055	50 x 9 ml
Saline Peptone Water GRAVI LAB-BAG™	WR 0008	1 x 3 L
Saline Peptone Water GRAVI LAB-BAG™	WR 0009	1 x 5 L
Saline Peptone Water (SLW) DRYGravi LAB-BAG™	DGB 05	1 x 20 L
Saline Peptone Water (SLW) DRYGravi LAB-BAG™	DGB 03	1 x 10 L
SLW DRYGravi LAB-BAG™	DVT 005	1 x 20 L + filter unit
SLW DRYGravi LAB-BAG™	DVT 007	1 x 10 L + filter unit
Saline Peptone Water with Neutralized (ISO 18593)	BT 5060.01	6 x 100 ml
Saline Peptone Water with Neutralized (ISO 18593)	BT 5060.02	6 x 200 ml
Saline Peptone Water with Neutralized (ISO 18593)	BT 5060.05	6 x 500 ml
Saline Peptone Water with Neutralized (ISO 18593)	BT 5182	6 x 20 ml

Diluents

Diluants

Products	Cat. No.	Package
0,85% Sodium Chloride	BT 5054.01	6 x 100 ml
0,85% Sodium Chloride	BT 5054.02	6 x 200 ml
0,85% Sodium Chloride	BT 5054.05	6 x 500 ml
0,85 % Sodium Chloride	PW 3053	50 x 5 ml
0,85 % Sodium Chloride	PW 3145	50 x 2 ml
0,85 % Sodium Chloride	PW 3151	50 x 9 ml
0,85 % Sodium Chloride GRAVI LAB-BAG™	WR 0002	1 x 5 L
0,9% Sodium Chloride	BT 5045.01	6 x 100 ml
0,9% Sodium Chloride	BT 5045.02	6 x 200 ml
0,9% Sodium Chloride	BT 5045.05	6 x 500 ml
0,9 % Sodium Chloride	PW 3087	50 x 1 ml
0,9 % Sodium Chloride	PW 3150	50 x 2 ml
0,9 % Sodium Chloride	PW 3088	50 x 3 ml
0,9 % Sodium Chloride	PW 3054	50 x 5 ml
0,9 % Sodium Chloride	PW 3198	50 x 3 ml (glass tubes)
0,9 % Sodium Chloride GRAVI LAB-BAG™	WR 0013	1 x 5 L

Contact plates

(Ø -55mm) - used for the monitoring of microbial contamination in industrial and hospital cleanroom and other healthcare environments. They are generally used for monitoring worktops, walls, floors, personnel clothing and bodies by applying the agar manually or using a contact plates applicator (ref. APL416). Agar contact surface area 25 cm² (additionally divided in 1 cm² quadrants); convex meniscus; storage 15 - 25°C; expiry up to 6 months

Plaques de contact

(Ø -55mm) Utilisé pour le contrôle microbiologique de la contamination microbienne dans les salles blanches, industrielles, hospitalières et autres environnements de soins de santé. Ils sont généralement utilisés pour détection de les plans de travail, les murs, les sols, les vêtements personnels et les corps en en appliquant la gélose la main ou en utilisant un applicateur de plaques de contact (réf. APL416). Surface de contact de la gélose est 25 cm² (en plus divisé en quadrants de 1 cm²) ménisque convexe ; stockage 15 - 25 °C ; expiration jusqu' 6 mois.

Products	Cat. No.	Package
Baird Parker LAB-AGAR™ + Letheen + Tween	BR 28	4x5 plates
Cetrimide LAB-AGAR™	BR 16	4x5 plates
Cetrimide LAB-AGAR™ + Letheen + Tween	BR 20	4x5 plates
Chromogenic Listeria LAB-AGAR™ acc. to ISO 11290	BR 31	4x5 plates
Chromogenic Salmonella Selective LAB-AGAR™ + Letheen + Tween	BR 24	4x5 plates
Chromogenic Salmonella Selective LAB-AGAR™	BR 25	4x5 plates
Mannitol Salt LAB-AGAR™	BR 15	4x5 plates
TBX LAB-AGAR™	BR 22	4x5 plates
TBX LAB-AGAR™ + Letheen + Tween	BR 23	4x5 plates
VRBG LAB-AGAR™	BR 17	4x5 plates
VRBG LAB-AGAR™ + Letheen + Tween	BR 13	4x5 plates
VRBL LAB-AGAR™	BR 18	4x5 plates
VRBL LAB-AGAR™+ 4N	BR 32	4x5 plates

Contact plates – gamma irradiated (Ø 55mm)

Recommended especially for use in cleanrooms. Triple wrapping allows the removal of each wrap as the plates are taken further into cleanroom. Can be used manually or with the APL 416 applicator; Agar contact surface area 25 cm² (additionally divided in 1 cm² quadrants); convex meniscus; storage 15 - 25°C; expiry up to 9 months; triple wrapped, gamma irradiated

Plaques de contact- irradié aux rayons gamma (Ø 55mm)

Recommandé particulièrement pour usage dans les salles blanches. Système du triple emballage permet de retirer chaque emballage lorsque les plaques sont acheminées plus loin dans la salle blanche. Il est possible de les utiliser à la main ou avec un applicateur pour plaques de contact APL 416. Surface de contact de la gélose est 25 cm² (en plus divisé en quadrants de 1 cm²) ménisque convexe ; stockage 15 - 25 ° C; expiration jusqu'à 9 mois, triple emballage, irradié aux rayons gamma.

Products	Cat. No.	Package
PCA IRR. LAB-AGAR™	BRD 01	4x5 plates
PCA IRR. LAB-AGAR™ +Letheen	BRD 02	4x5 plates
PCA IRR. LAB-AGAR™ +Letheen + Tween	BRD 03	4x5 plates
PCA IRR. LAB-AGAR™ + 4N	BRD 27	4x5 plates
Sabouraud Dextrose IRR. LAB-AGAR™	BRD 04	4x5 plates
Sabouraud Dextrose IRR. LAB-AGAR™+Letheen	BRD 05	4x5 plates
Sabouraud Dextrose IRR. LAB-AGAR™+Letheen + Tween	BRD 06	4x5 plates
Sabouraud Dextrose IRR. LAB-AGAR™+4N (letheen, tween, L-histidine, sodium thiosulfate)	BRD 26	4x5 plates
Sabouraud Dextrose IRR.LAB-AGAR™+4N (letheen, tween, L-histidine, sodium thiosulfate)	BRD 26B	4x5 plates
Sabouraud Dextrose with Chloramphenicol IRR.LAB-AGAR™	BRD 07	4x5 plates
Sabouraud Dextrose with Chloramphenicol IRR. LAB-AGAR™ +Letheen	BRD 08	4x5 plates
Sabouraud Dextrose with Chloramphenicol IRR.LAB-AGAR™ +Letheen+ Tween	BRD 09	4x5 plates
TSA IRR. LAB-AGAR™	BRD 10	4x5 plates
TSA IRR. LAB-AGAR™+Letheen	BRD 11	4x5 plates
TSA IRR. LAB-AGAR™+Letheen + Tween	BRD 12	4x5 plates
TSA IRR.LAB-AGAR™ + 3 N (letheen, tween, L-histidine)	BRD 19	4x5 plates
TSA IRR.LAB-AGAR™ + 4 N (letheen, tween, L-histidine, sodium thiosulfate)	BRD 14	4x5 plates

Contact plates applicator

Applicateur de plaques de contact

Products	Cat. No.	Package
Contact plates applicator - for standardised sampling and surface cleanliness testing Applicateur pour plaques de Contact - pour l'échantillonnage stérilisé et analyse de la propreté de la surface	APL 416	1 pcs



Sedimentation plates (Ø 90mm) used for the monitoring of microbial contamination in the air in the cleanrooms of pharmaceutical industries and hospitals.

Can be used in dynamic air sampling with Air Sampler or in static sampling of ambient air. It is also suitable for personnel monitoring, e.g. gloves, hands. These culture media are easy-to-use, triple-wrapped, gamma irradiated, enabling efficient monitoring for micro-organisms during production processes.

Plaques de sédimentation (Ø 90mm)

Utilisé pour le contrôle microbiologique de la contamination microbienne dans les salles blanches de industries pharmaceutiques et hôpitaux.

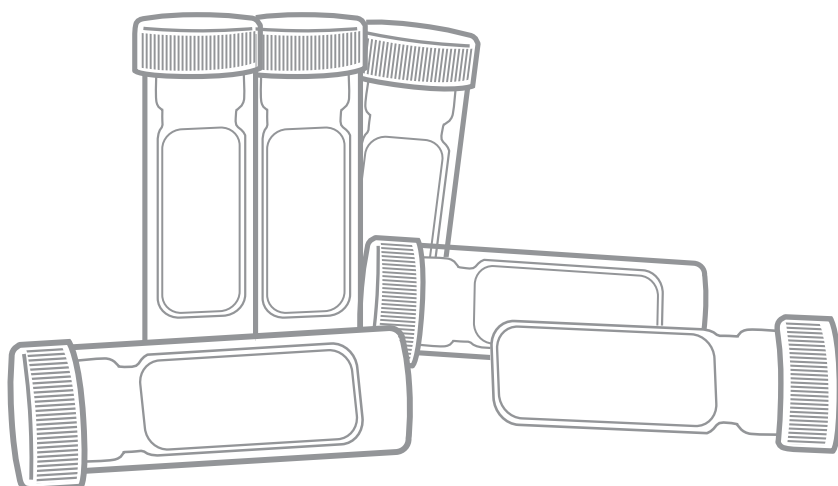
Ils peuvent être utilisés pour échantillonnage de l'air dynamique avec un échantillonneur d'air ou en échantillonnage statique de l'air ambiant. Ces plaques sont approprié pour la surveillance du personnel par exemple les gants, les mains. Ils sont facile à utiliser, triple emballage, irradié aux rayons gamma, permettent une surveillance efficace des micro-organismes au cours des processus de production.

Products	Cat. No.	Package
Sabouraud Dextrose IRR. LAB-AGAR™	PPR 1230	10 plates
Sabouraud Dextrose with Chloramphenicol IRR. LAB-AGAR™	PPR 1231	10 plates
Trypticasein Soy IRR. LAB-AGAR™	PPR 1180	10 plates
TSA IRR. LAB-AGAR™ + Letheen + Tween 80	PPR 0046	10 plates
TSA IRR. LAB-AGAR™ + Letheen + Tween 80 (FP)	PPR 0116	10 plates
Trypticasein Soy IRR. LAB-AGAR™ + 4N	PPR 1180N	10 plates
TSA IRR. LAB-AGAR™ + Neutralized	PPR 0135	10 plates

DIPSLIDE- for microbiological monitoring. Test for the presence of microorganisms on surfaces, in liquids and semi solid materials, economical, easy to use, high specificity, long expiry date

DIPSLIDE- pour le contrôle microbiologique. Un test de détection de la présence de microorganismes sur les surfaces, dans les liquides et les matériaux semi-solides. Très économique, facile à utiliser, avec une grande spécificité et une longue date de péremption.

Description	Cat. No.	Package
TSA LAB-AGAR™ with TTC / ROSE BENGAL w. CHLORAMPHENICOL LAB-AGAR™	DP 01	20 pcs
PCA LAB-AGAR™ / ROSE BENGAL w. CHLORAMPHENICOL LAB-AGAR™	DP 02	20 pcs
PCA LAB-AGAR™ / LEGIONELLA GVPC LAB-AGAR™	DP 03	20 pcs
PCA LAB-AGAR™ / VRBL LAB-AGAR™	DP 04	20 pcs
NUTRIENT LAB-AGAR™ / NUTRIENT LAB-AGAR™ with TTC	DP 05	20 pcs
PCA LAB-AGAR™ / VRBG LAB-AGAR™	DP 06	20 pcs
PCA LAB-AGAR™ / PCA LAB-AGAR™	DP 07	20 pcs
PCA LAB-AGAR™ / TSA LAB-AGAR™ w. TWEEN and LETHEEN	DP 08	20 pcs
VRBG LAB-AGAR™ / VRBG LAB-AGAR™	DP 09	20 pcs
SABOURAUD w. CHLORAMPHENICOL LAB-AGAR™ / SABOURAUD w. CHLORAMPHENICOL LAB-AGAR™	DP 10	20 pcs
DE NEUTRAL LAB-AGAR™ / DE NEUTRAL LAB-AGAR™	DP 11	20 pcs
CLED LAB-AGAR™ / Mac CONKEY LAB-AGAR™	DP 12	20 pcs
Mac CONKEY LAB-AGAR™ / CETRIMIDE LAB-AGAR™	DP 13	20 pcs
VRBG LAB-AGAR™ / TBX LAB-AGAR™	DP 15	20 pcs



Microbank® - ready-to-use system designed to greatly simplify the storage and retrieval of bacterial cultures

Microbank® - système prêt à l'emploi conçu pour simplifier considérablement le stockage et la récupération des cultures bactériennes

Products	Cat. No.	Package
Microbank® - Mix (16 vials x5 colors)	PL.170/M	80 vials
Microbank® - blue	PL.170/B	80 vials
Microbank® - green	PL.170/G	80 vials
Microbank® - red	PL.170/R	80 vials
Microbank® - yellow	PL.170/Y	80 vials
Microbank® - light blue	PL.170/LB	80 vials
Cryblock Insulated Aluminium Block - aluminium	PL.155-1	1 pcs /20 vials
Aluminium Cryocanes	PL.166	12 pcs
Microbank® Freezer Storage Box	PL.169/B-1	1 pcs /80 vial

McFarland Set

Ensemble McFarland

Products	Cat. No.	Package
McFarland Standard - Set of 0.5-4.0	SD 2350	10 ml x 5
McFarland Standard 0.5	SD 2300	10 ml
McFarland Standard 1.0	SD 2301	10 ml
McFarland Standard 2.0	SD 2302	10 ml
McFarland Standard 3.0	SD 2303	10 ml
McFarland Standard 4.0	SD 2304	10 ml

Reference Strains

first generation cultures (a single subculture from the parent strain). The numbers in the discs are in the region of 10^6 to 10^9

Souches de référence - cultures de première génération (une seule sous-culture de la souche parente). Les numéros dans les disques sont dans la région de 10^6 à 10^9

Cat.no	Micro-organism Name	Strain Designation	WDCM Number discs in vial	number of	cat.no	number of discs in vial
MM94-10	Aspergillus brasiliensis	NCPF 2275 / ATCC® 16404	00053	10		
MM21-10	Bacillus cereus	NCTC 10320 / ATCC® 9634	00001	10		
MM86-10	Bacillus cereus	NCTC 7464 / ATCC® 10876		10	MM86-25	25
MM29-10	Bacillus subtilis	NCTC 10400 / ATCC® 6633	00003	10	MM29-25	25
MM44-10	Bacteroides fragilis	NCTC 9343 / ATCC® 25285		10		
MM70-10	Burkholderia cepacia	NCTC 10661 / ATCC® 17759		10		
MM36-10	Campylobacter jejuni	NCTC 11351 / ATCC®33560		10		
MM82-10	Campylobacter jejuni	NCTC 11322 / ATCC® 29428	00156	10		
MM28-10	Candida albicans	NCPF 3255 / ATCC® 2091	00055	10	MM28-25	25
MM42-10	Candida albicans	NCPF 3179 / ATCC® 10231	00054	10	MM42-25	25
MM53-10	Candida crusei	NCPF 3953 / ATCC® 6258		10		
MM54-10	Candida parapsilosis	NCPF 8334 / ATCC® 22019		10		
MM69-10	Candida glabrata	NCPF 3309 / ATCC® 2001		10		
MM71-10	Candida guilliermondii	NCPF 3099 / ATCC® 5276		10		
MM72-10	Candida lusitanae	NCPF 3954		10		
MM90-10	Candida tropicalis	NCPF 3290 / ATCC® 44508		10		
MM27-10	Citrobacter freundii	NCTC 9750 / ATCC® 8090		10		
MM45-10	Clostridium perfringens	NCTC 8237 / ATCC® 13124	00007	10		
MM31-10	Clostridium sporogenes	NCTC 532 / ATCC® 19404	00008	10		
MM26-10	Enterobacter aerogenes	NCTC 10006 / ATCC® 13048		10	MM26-25	25
MM01-10	Enterobacter cloacae	NCTC 13380 / ATCC® 23355	00082	10		
MM51-10	Enterobacter cloacae	NCTC 13406		10		

Reference Strains

 first generation cultures (a single subculture from the parent strain). The numbers in the discs are in the region of 10^6 to 10^9

 Souches de référence - cultures de première génération (une seule sous-culture de la souche parente). Les numéros dans les disques sont dans la région de 10^6 à 10^9

Cat.no	Micro-organism Name	Strain Designation	WDCM Number discs in vial	number of	cat.no	number of discs in vial
MM17-10	<i>Enterococcus faecalis</i>	NCTC 775 / ATCC® 19433	00009	10	MM17-25	25
MM18-10	<i>Enterococcus faecalis</i>	NCTC 12697 / ATCC® 29212	00087	10	MM18-25	25
MM52-10	<i>Enterococcus faecalis</i>	NCTC 13379 / ATCC® 51299	00085	10		
MM35-10	<i>Enterococcus hirae</i>	NCTC13383 / ATCC® 10541	00011	10		
MM02-10	<i>Escherichia coli</i>	NCTC 12241 / ATCC® 25922	00013	10	MM02-25	25
MM24-10	<i>Escherichia coli</i>	NCTC 11954 / ATCC® 35218		10	MM24-25	25
MM33-10	<i>Escherichia coli</i>	NCTC10418 / ATCC® 10536		10	MM33-25	25
MM38-10	<i>Escherichia coli</i>	NCTC 12923 / ATCC® 8739	00012	10	MM63-25	25
MM63-10	<i>Escherichia coli</i>	NCTC 11560		10		
MM75-10	<i>Escherichia coli</i>	NCTC 9001 / ATCC® 11755	00090	10		
MM34-10	<i>Escherichia coli</i>	NCTC 13846		10		
MM57-10	<i>Escherichia coli</i>	NCTC 13476 Class B IMP enzymes		10		
MM93-10	<i>Escherichia coli</i> O157 non-toxicogenic	NCTC 12900 / ATCC® 700728	00014	10	MM93-25	25
MM81-10	<i>Haemophilus influenzae</i>	NCTC 12699 / ATCC® 49247		10		
MM37-10	<i>Haemophilus influenzae</i>	NCTC 12975 / ATCC® 49766		10		
MM98-10	<i>Haemophilus influenzae</i>	NCTC 11931		10		
MM100-10	<i>Haemophilus influenzae</i>	NCTC 8468 / ATCC® 9334		10		
MM88-10	<i>Klebsiella aerogenes</i>	NCTC 9528		10		
MM04-10	<i>Klebsiella pneumoniae</i>	NCTC 9633 / ATCC® 13883	00097	10	MM04-25	25
MM83-10	<i>Klebsiella pneumoniae</i>	NCTC 13368 / ATCC® 700603		10		
MM58-10	<i>Klebsiella pneumoniae</i> (CRE)	NCTC 13438 Class A KPC (<i>Klebsiella pneumoniae</i> carbapenemase) enzymes		10		
MM55-10	<i>Klebsiella pneumoniae</i> (CRE)	NCTC 13440 Class B VIM (Verona Integron-encoded metallo-beta-lactamase) enzymes		10		
MM56-10	<i>Klebsiella pneumoniae</i> (CRE)	NCTC 13443 Class B NDM (New Delhi metallo-beta-lactamase) enzymes		10		
MM76-10	<i>Lactobacillus brevis</i>	NCTC 13386 / ATCC® 8287		10		
MM99-10	<i>Legionella anisa</i>	NCTC 11974 / ATCC® 35292	00106	10		
MM08-10	<i>Legionella pneumophila</i> serogroup 1	NCTC 11192 / ATCC® 33152		10		
MM92-10	<i>Listeria innocua</i>	NCTC 11288 / ATCC® 33090	00017	10		
MM60-10	<i>Listeria ivanovii</i>	NCTC 11007 / ATCC® 19119	00018	10		
MM48-10	<i>Listeria monocytogenes</i>	NCTC 7973 / ATCC® 35152	00109	10	MM48-25	25
MM77-10	<i>Listeria monocytogenes</i>	NCTC 13372 ATCC® 7644		10		
MM87-10	<i>Listeria monocytogenes</i>	NCTC 11994	00019	10		
MM47-10	<i>Listeria monocytogenes</i>	NCTC 10527 / ATCC® 13932		10		
MM05-5	<i>Neisseria gonorrhoeae</i>	NCTC 8375 / ATCC® 19424		5		
MM96-5	<i>Neisseria gonorrhoeae</i>	NCTC 12700 / ATCC® 49226		5		
MM22-10	<i>Proteus mirabilis</i>	NCTC® 11938	00023	10		
MM43-10	<i>Proteus mirabilis</i>	NCTC 13376 / ATCC® 14153		10		
MM68-10	<i>Proteus mirabilis</i>	NCTC 10975		10		
MM09-10	<i>Proteus vulgaris</i>	NCTC 4175 / ATCC® 13315		10	MM09-25	25
MM10-10	<i>Pseudomonas aeruginosa</i>	NCTC 12903 / ATCC® 27853	00025	10	MM10-25	25
MM40-10	<i>Pseudomonas aeruginosa</i>	NCTC 12924 / ATCC® 9027		10	MM40-25	25
MM41-10	<i>Pseudomonas aeruginosa</i>	NCTC 13359 / ATCC® 15442		10		
MM65-10	<i>Pseudomonas aeruginosa</i>	NCTC 10662 / ATCC® 25668	00114	10		
MM97-10	<i>Rhodococcus equi</i>	NCTC 1621 / ATCC® 6939	00028	10		
MM73-10	<i>Saccharomyces cerevisiae</i>	NCPF 3178		10	MM73-25	25
MM50-10	<i>Saccharomyces cerevisiae</i>	NCTC 10716/ATCC 9763/	00058	10		
MM84-10	<i>Salmonella</i> Nottingham	NCTC 7832		10		

Reference Strains

first generation cultures (a single subculture from the parent strain). The numbers in the discs are in the region of 10^6 to 10^9

Souches de référence - cultures de première génération (une seule sous-culture de la souche parente). Les numéros dans les disques sont dans la région de 10^6 à 10^9

Cat.no	Micro-organism Name	Strain Designation	WDCM Number	number of discs in vial	cat.no	number of discs in vial
MM89-10	Salmonella Poona	NCTC 4840		10	MM89-25	25
MM11-10	Salmonella Typhimurium	NCTC 12023 / ATCC® 14028	00031	10	MM11-25	25
MM62-10	Salmonella Enteritidis	NCTC 12694 / ATCC® 13076	00030	10		
MM12-10	Serratia marcescens	NCTC 13382 / ATCC® 8100		10		
MM07-10	Shigella sonnei	NCTC 12984 / ATCC® 29930	00127	10		
MM13-10	Staphylococcus aureus	NCTC12981 / ATCC® 25923	00034	10	MM13-25	25
MM14-10	Staphylococcus aureus	NCTC 12973 / ATCC® 29213	00131	10	MM14-25	25
MM30-10	Staphylococcus aureus	NCTC 7447 / ATCC® 6538P	00033	10	MM30-25	25
MM46-10	Staphylococcus aureus	NCTC 10788 / ATCC® 6538	00032	10	MM46-25	25
MM64-10	Staphylococcus aureus (MRSA)	NCTC 12493		10		
MM85-10	Staphylococcus aureus	NCTC 6571 / ATCC® 9144	00035	10		
MM91-10	Staphylococcus aureus (MRSA)	NCTC 13373 / ATCC® 43300		10		
MM15-10	Staphylococcus epidermidis	NCTC 13360 / ATCC® 12228	00036	10	MM15-25	25
MM16-10	Streptococcus agalactiae	NCTC 8181 / ATCC® 13813		10		
MM60-10	Streptococcus dysgalactiae subsp. equisimilis	NCTC® 13762		10		
MM19-10	Streptococcus pneumoniae	NCTC 12695 / ATCC® 6303		10	MM19-25	25
MM95-10	Streptococcus pneumoniae	NCTC 12977 / ATCC® 49619		10		
MM20-10	Streptococcus pyogenes	NCTC 12696 / ATCC® 19615		10	MM20-25	25
MM06-10	Vibrio parahaemolyticus	NCTC 10885	00185	10		
MM80-10	Yersinia enterocolitica	NCTC 12982 / ATCC® 9610	00038	10	MM80-25	25

Selectrol® is first generation derivative of original stock cultures obtained exclusively from the NATIONAL Collection of Type Cultures (NCTC®) or National Collection of Patho-genic Fungi (NCPF®).

Where appropriate other international strain designations, such as the ATCC®, are listed for reference purposes only.

NCTC® and NCPF® are trademarks of Public Health England.

ATCC® strains are listed for reference only.

ATCC® is registered trademark of the American Type Culture Collection.



BioMaxima S.A.
ul. Vetterów 5
20-277 Lublin, Poland
www.biomaxima.com

phone +48 81 467 90 61
fax +48 81 744 29 15
export@biomaxima.com
support@biomaxima.com
microbiology@biomaxima.com